

BUDGET 2010 *Ottawa*

Transit Committee

Draft Operating and Capital Budget

Tax Supported Programs



ottawa.ca

City services **3-1-1**
TTY 613-580-2401

200906012

Released October 23, 2009

Transit Committee Summaries

Briefing Note	1
Operating Revenue	6
Operating Expenditures	7
Operating Net Requirement	8
Full Time Equivalents	9

Transit

Operating Resource Requirement	10
Change in 2010 Operating Budget	11
Explanatory Notes	12
User Fees	15
Budget Options	16
Capital Budget	22
Capital Summary	22
Project Details	23
Works-in-Progress	52
Forecast 2011 - 2019	56

Transit Services Department – 2010 Budget Briefing Note

Description

The Transit Services department is responsible for the delivery of environmentally-friendly public transit services to residents, businesses and tourists in the City of Ottawa. The department runs two types of services which are becoming progressively more integrated: the regular transit service (buses and light rail) and specialized service for persons with disabilities (Para Transit). We meet the transit ridership growth target by introducing new routes, new buses, fare systems and facilities.

Programs / Services Offered

- Conventional Transit
- O-Train
- Para Transit

Support Services for Transit are delivered internally and include:

- Maintenance of Assets (buses and facilities)
- Transit Law Enforcement
- Marketing and Customer Service
- Service Design
- Training
- Safety Management and Regulatory Assurance
- Project Management for Transit led capital development (Incl. Technical Management for Bus Procurement)
- Responsible for performance metrics, surveys, quality processes, Council and stakeholder liaison and tactical direction.

Transit Services Department – 2010 Budget Briefing Note

Re-Organizations

- In 2008, as part of an organizational and governance review, Transit Services re-organized their department's structure in 2008 to align with Council's directions.
- In July 2008, Transit Fleet and Material Management functions were integrated into Transit Services. Technical Services and Maintenance Planning functions were also created to support the department. In Q3, with commencement of the Smartcard program a Capital Projects section was created schedule to ensure appropriate control of scope, schedule and budget
- In January 2009, Transit Services established a Regulatory Assurance and Safety section. In Q3 2009, a new branch was established to deal with facility maintenance and development. The Program Manager, RPAM, reports to the Manager of Transit Projects and Facility Maintenance.

Performance / Outcome Measures

2009 performance and outcome measures, and the budget, will reflect the transit strike, back-to-service issues and arbitration results with ATU 279.

- Ridership and revenue projections for 2010 are based on no increase in service hours over 2009 levels, and a 7.5% increase in fares effective July 1, 2010. This is the last increase of a three-year plan to raise fares by 7.5%.
- Projected 2010 ridership is 101.7M passengers, which results in fare revenue of \$158.732M.
- The 2009 ridership level is 80.2M (projected). The low figure is the result of the transit strike. There was an expected decline in ridership for 2009; however, the decline was less than expected. For example, in July 2009, ridership was budgeted to decline by 8.5% compared to July 2008, but ridership actually declined by 6.1% during this period. Therefore, in July 2009, actual ridership exceeded budgeted ridership by 2.4%.

Transit Services Department – 2010 Budget Briefing Note

2010 Budget Risks / Other Considerations

2010 Budget Risks

- 2010 budget risks are mainly as a result of the transit strike, economic conditions and employment levels.
- A reduction in the projected ridership numbers will have a negative effect on the budget.
- An increase in the fare of 7.5% may decrease ridership.
- A \$12.6M efficiency target is contained in the Budget and is largely known. Delays/re-scoping of IT-related initiatives may be offset by other savings. Fuel prices are hedged to 75% for 2010.
- An arbitration settlement has been decided; however, the full impact of these decisions is still to be determined.
- Risks also include implementation of a number of projects designed to improve efficiencies, such as adding new Smartbus features to enhance maintenance protocols and business processes.
- Transit Services submitted an inflationary increase of \$440K on \$59.4M of non-labour expenses.

Other Considerations

The 2009 Budget was significantly affected by the ATU 279 strike and the return-to-service issues that resulted, such as reduced ridership, maintenance requirements for buses and articulated bus warranty/mechanical problems. The strike also resulted in a decision by management and ATU 279 to move the collective agreement to binding arbitration. The results of the arbitration have been received and will affect the 2009 and 2010 budgets, but the implications are unknown at this time.

Transit Services has taken a one-time benefit of no increase in maintenance parts procurement due to the delivery of new hybrid buses.

As we move towards 2010, a number of projects have been identified as strategic priorities, including:

- Smartcard
- Smartbus Advancements / Next Stop Announcement System
- Articulated Bus Garage

Transit Services Department – 2010 Budget Briefing Note

2010 Budget Risks / Other Considerations

- Transit System Security Improvement Project

A number of initiatives, designed to increase efficiencies, will continue to be introduced, including:

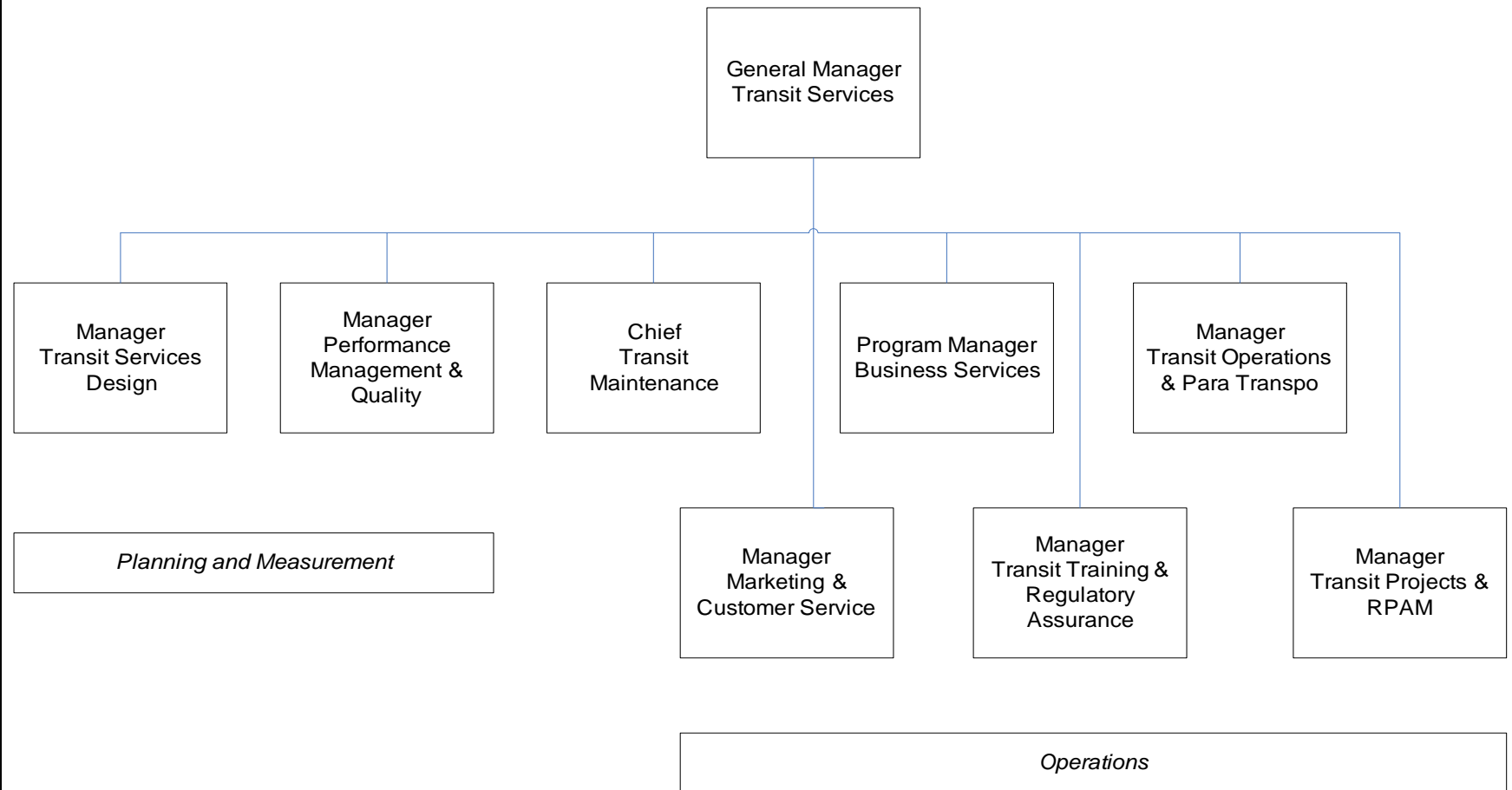
- Increasing bus availability to 90% by 2014
- Completion of acquisition of 177 Hybrid buses
- Moving toward fare ratio of 50%
- Preparing for rail implementation
- Enhancing maintenance procedures and standards and revising business processes
- Completion of double-decker pilot study

The addition of Infrastructure Stimulus funding will also assist the City in achieving progress on the Transit priority. In particular, key initiatives include the South West Transitway Extension at Fallowfield and Barrhaven, the Baseline Station Tunnel and College Avenue Overpass, and the Woodroffe Avenue Pedestrian Overpass to Baseline Transit Station.

Transit Services Department – 2010 Budget Briefing Note

Org Chart

Interim Organizational Structure – Transit Services



City of Ottawa
Transit - Operating Revenue

In Thousands (\$000)

Operating Revenue	2008	2009		2010	\$ Change Over		2011	2012
	Actual	Forecast	Revised Budget*	Estimate	2009 Budget	2008 Actual	Forecast	
By Department								
Transit	(150,317)	(163,006)	(161,506)	(189,281)	(27,775)	(38,964)	(204,485)	(214,182)
Total Revenue	(150,317)	(163,006)	(161,506)	(189,281)	(27,775)	(38,964)	(204,485)	(214,182)
By Type								
Federal	-	-	-	-	-	-	-	-
Provincial	(16,150)	(27,419)	(27,419)	(24,954)	2,465	(8,804)	(24,954)	(24,954)
Municipal	(2,866)	(12,549)	(12,549)	(8,804)	3,745	(5,938)	-	-
Own Funds	-	-	-	-	-	-	-	-
Fees and Services	(131,301)	(123,038)	(121,538)	(164,327)	(42,789)	(33,026)	(179,531)	(189,228)
Fines	-	-	-	-	-	-	-	-
Other	-	-	-	8,804	8,804	8,804	-	-
Total Revenue	(150,317)	(163,006)	(161,506)	(189,281)	(27,775)	(38,964)	(204,485)	(214,182)

* Revised 2009 Budget for the results of the Transit Strike as approved by Council 27 February 2009.

City of Ottawa
Transit - Operating Expenditures

In Thousands (\$000)

Net of Recoveries and After Inter-departmental Allocations

Operating Expenditures	2008	2009		2010	\$ Change Over		2011	2012
	Actual	Forecast	Revised Budget*	Estimate	2009 Budget	2008 Actual	Forecast	
By Department								
Transit	331,081	331,964	330,464	379,723	49,259	48,642	402,888	434,850
Net Expenditures	331,081	331,964	330,464	379,723	49,259	48,642	402,888	434,850
By Type								
Salaries, Wages & Benefits	180,614	191,422	194,863	228,344	33,481	47,730	240,658	263,864
Overtime	13,314	13,241	10,741	12,172	1,431	(1,142)	12,172	12,172
Material & Services	67,746	78,736	78,277	82,820	4,543	15,074	91,271	98,582
Transfers/Grants/Financial Charges	33,867	33,330	33,522	41,036	7,514	7,169	43,436	44,881
Fleet Costs	1,013	384	384	566	182	(447)	566	566
Program Facility Costs	20,931	20,093	20,493	22,601	2,108	1,670	22,601	22,601
Other Internal Costs	22,623	3,145	1,211	1,211	-	(21,412)	1,211	1,211
Gross Expenditures	340,108	340,351	339,491	388,750	49,259	48,642	411,915	443,877
Recoveries & Allocations	(9,027)	(8,387)	(9,027)	(9,027)	-	-	(9,027)	(9,027)
Net Expenditure	331,081	331,964	330,464	379,723	49,259	48,642	402,888	434,850

* Revised 2009 Budget for the results of the Transit Strike as approved by Council 27 February 2009.

City of Ottawa
Transit - Net Operating Requirement

In Thousands (\$000)

Net of Revenues, Recoveries and After Inter-departmental Allocations

Net Operating Requirement	2008	2009		2010	\$ Change Over		2011	2012
	Actual	Forecast	Revised Budget*	Estimate	2009 Budget	2008 Actual	Forecast	
By Department								
Transit	180,764	168,958	168,958	190,442	21,484	9,678	198,403	220,668
Net Requirement	180,764	168,958	168,958	190,442	21,484	9,678	198,403	220,668
Expenditures by Type								
Salaries, Wages & Benefits	180,614	191,422	194,863	228,344	33,481	47,730	240,658	263,864
Overtime	13,314	13,241	10,741	12,172	1,431	(1,142)	12,172	12,172
Material & Services	67,746	78,736	78,277	82,820	4,543	15,074	91,271	98,582
Transfers/Grants/Financial Charges	33,867	33,330	33,522	41,036	7,514	7,169	43,436	44,881
Fleet Costs	1,013	384	384	566	182	(447)	566	566
Program Facility Costs	20,931	20,093	20,493	22,601	2,108	1,670	22,601	22,601
Other Internal Costs	22,623	3,145	1,211	1,211	-	(21,412)	1,211	1,211
Gross Expenditures	340,108	340,351	339,491	388,750	49,259	48,642	411,915	443,877
Recoveries & Allocations	(9,027)	(8,387)	(9,027)	(9,027)	-	-	(9,027)	(9,027)
Net Expenditure	331,081	331,964	330,464	379,723	49,259	48,642	402,888	434,850
By Revenue Type								
Federal	-	-	-	-	-	-	-	-
Provincial	(16,150)	(27,419)	(27,419)	(24,954)	2,465	(8,804)	(24,954)	(24,954)
Municipal	(2,866)	(12,549)	(12,549)	(8,804)	3,745	(5,938)	-	-
Own Funds	-	-	-	-	-	-	-	-
Fees and Services	(131,301)	(123,038)	(121,538)	(164,327)	(42,789)	(33,026)	(179,531)	(189,228)
Fines	-	-	-	-	-	-	-	-
Other	-	-	-	8,804	8,804	-	-	-
Total Revenue	(150,317)	(163,006)	(161,506)	(189,281)	(27,775)	(38,964)	(204,485)	(214,182)
Net Requirement	180,764	168,958	168,958	190,442	21,484	9,678	198,403	220,668

* Revised 2009 Budget for the results of the Transit Strike as approved by Council 27 February 2009.

City of Ottawa
Transit - Full Time Equivalents
 In Thousands (\$000)

Full Time Equivalents	2008	2009		2010	Change Over		2011	2012
	Actual	Forecast	Budget	Estimate	2009 Budget	2008 Actual	Forecast	
By Department								
Transit	2,834.19	3,047.04	3,047.04	3,055.04	8.00	220.85	3,117.04	3,232.04
Total Full Time Equivalents (FTE's)	2,834.19	3,047.04	3,047.04	3,055.04	8.00	220.85	3,117.04	3,232.04

City of Ottawa
Transit - Operating Resource Requirement

In Thousands (\$000)

Operating Resource Requirement	2008	2009		2010	\$ Change Over		2011	2012
	Actual	Forecast	Revised Budget*	Estimate	2009 Budget	2008 Actual	Forecast	
Expenditures by Program								
General Manager's Office	1,237	1,302	1,302	664	(638)	(573)	664	664
Performance Measurement	101	1,050	1,050	1,324	274	1,223	1,294	1,324
Marketing & Customer Services	9,700	7,725	7,925	8,021	96	(1,679)	8,021	8,021
Service Design	1,202	1,051	1,279	1,401	122	199	1,401	1,401
Transit Operations	137,023	139,873	140,713	143,457	2,744	6,434	156,371	179,584
Rail, Safety & Dev	13,133	14,816	15,916	15,613	(303)	2,480	16,123	16,438
Transit Maintenance	146,845	145,797	143,822	190,605	46,783	43,760	190,008	198,412
Para Transpo	27,955	25,804	27,204	28,533	1,329	578	29,533	29,533
Pension Benefits	2,912	2,933	2,933	8,500	5,567	5,588	8,500	8,500
Productivity Improvements	-	-	(2,653)	(9,368)	(6,715)	(9,368)	-	-
Gross Expenditure	340,108	340,351	339,491	388,750	49,259	48,642	411,915	443,877
Recoveries & Allocations	(9,027)	(8,387)	(9,027)	(9,027)	-	-	(9,027)	(9,027)
Net Expenditure	331,081	331,964	330,464	379,723	49,259	48,642	402,888	434,850
Expenditures by Type								
Salaries, Wages & Benefits	180,614	191,422	194,863	228,344	33,481	47,730	240,658	263,864
Overtime	13,314	13,241	10,741	12,172	1,431	(1,142)	12,172	12,172
Material & Services	67,746	78,736	78,277	82,820	4,543	15,074	91,271	98,582
Transfers/Grants/Financial Charges	33,867	33,330	33,522	41,036	7,514	7,169	43,436	44,881
Fleet Costs	1,013	384	384	566	182	(447)	566	566
Program Facility Costs	20,931	20,093	20,493	22,601	2,108	1,670	22,601	22,601
Other Internal Costs	22,623	3,145	1,211	1,211	-	(21,412)	1,211	1,211
Gross Expenditures	340,108	340,351	339,491	388,750	49,259	48,642	411,915	443,877
Recoveries & Allocations	(9,027)	(8,387)	(9,027)	(9,027)	-	-	(9,027)	(9,027)
Net Expenditure	331,081	331,964	330,464	379,723	49,259	48,642	402,888	434,850
Revenues By Type								
Federal	-	-	-	-	-	-	-	-
Provincial	(16,150)	(27,419)	(27,419)	(24,954)	2,465	(8,804)	(24,954)	(24,954)
Municipal	(2,866)	(12,549)	(12,549)	(8,804)	3,745	(5,938)	-	-
Own Funds	-	-	-	-	-	-	-	-
Fees and Services	(131,301)	(123,038)	(121,538)	(164,327)	(42,789)	(33,026)	(179,531)	(189,228)
Fines	-	-	-	-	-	-	-	-
Other	-	-	-	8,804	8,804	8,804	-	-
Total Revenue	(150,317)	(163,006)	(161,506)	(189,281)	(27,775)	(38,964)	(204,485)	(214,182)
Net Requirement	180,764	168,958	168,958	190,442	21,484	9,678	198,403	220,668
Full Time Equivalents	2,834.19	3,047.04	3,047.04	3,055.04	8.00	220.85	3,117.04	3,232.04

* Revised 2009 Budget for the results of the Transit Strike as approved by Council 27 February 2009.

City of Ottawa
Transit - Operating Resource Requirement Analysis

In Thousands (\$000)

Operating Resource Requirement Analysis	2009 Baseline			2010 Adjustments						2010	\$ Change Over '09 Budget	% of Exp. on Comp./ Benefits
	Forecast	Revised Budget	Adj. to Base Budget	Maintain Services	Provincial Legislated	Growth	New Services / Needs	Efficiencies	User Fees & Charges	Estimate		
Expenditures by Program												
General Manager's Office	1,302	1,302	(662)	24	-	-	-	-	-	664	(638)	63.3%
Performance Measurement	1,050	1,050	-	61	-	213	-	-	-	1,324	274	61.1%
Marketing & Customer Services	7,725	7,925	(22)	118	-	-	-	-	-	8,021	96	71.7%
Service Design	1,051	1,279	(3)	80	-	45	-	-	-	1,401	122	95.4%
Transit Operations	139,873	140,713	(3,235)	2,772	-	3,207	-	-	-	143,457	2,744	97.1%
Rail, Safety & Dev	14,816	15,916	(904)	519	-	82	-	-	-	15,613	(303)	65.7%
Transit Maintenance	145,797	143,822	33,937	5,983	-	6,863	-	-	-	190,605	46,783	30.4%
Para Transpo	25,804	27,204	(404)	943	-	790	-	-	-	28,533	1,329	56.5%
Pension Benefits	2,933	2,933	-	5,567	-	-	-	-	-	8,500	5,567	100.0%
Productivity Improvements	-	(2,653)	(6,715)	-	-	-	-	-	-	(9,368)	(6,715)	0.0%
Gross Expenditure	340,351	339,491	21,992	16,067	-	11,200	-	-	-	388,750	49,259	61.9%
Recoveries & Allocations	(8,387)	(9,027)	-	-	-	-	-	-	-	(9,027)	-	-
Net Expenditure	331,964	330,464	21,992	16,067	-	11,200	-	-	-	379,723	49,259	
Percent of 2009 Net Expenditure Budget			6.7%	4.9%	0.0%	3.4%	0.0%	0.0%	0.0%	14.9%		
Expenditures by Type												
Salaries, Wages & Benefits	191,422	194,863	18,023	11,153	-	4,305	-	-	-	228,344	33,481	
Overtime	13,241	10,741	1,196	75	-	160	-	-	-	12,172	1,431	
Material & Services	78,736	78,277	(1,230)	2,718	-	3,055	-	-	-	82,820	4,543	
Transfers/Grants/Financial Charges	33,330	33,522	4,003	1,895	-	1,616	-	-	-	41,036	7,514	
Fleet Costs	384	384	182	-	-	-	-	-	-	566	182	
Program Facility Costs	20,093	20,493	(182)	226	-	2,064	-	-	-	22,601	2,108	
Other Internal Costs	3,145	1,211	-	-	-	-	-	-	-	1,211	-	
Gross Expenditures	340,351	339,491	21,992	16,067	-	11,200	-	-	-	388,750	49,259	
Recoveries & Allocations	(8,387)	(9,027)	-	-	-	-	-	-	-	(9,027)	-	
Net Expenditure	331,964	330,464	21,992	16,067	-	11,200	-	-	-	379,723	49,259	
Revenues By Type												
Federal	-	-	-	-	-	-	-	-	-	-	-	
Provincial	(27,419)	(27,419)	11,269	(8,804)	-	-	-	-	-	(24,954)	2,465	
Municipal	(12,549)	(12,549)	3,745	-	-	-	-	-	-	(8,804)	3,745	
Own Funds	-	-	-	-	-	-	-	-	-	-	-	
Fees and Services	(123,038)	(121,538)	(30,076)	(5,138)	-	(2,775)	-	-	(4,800)	(164,327)	(42,789)	
Fines	-	-	-	-	-	-	-	-	-	-	-	
Other	-	-	-	8,804	-	-	-	-	-	8,804	8,804	
Total Revenue	(163,006)	(161,506)	(15,062)	(5,138)	-	(2,775)	-	-	(4,800)	(189,281)	(27,775)	
Percent of 2009 Revenue Budget			9.3%	3.2%	0.0%	1.7%	0.0%	0.0%	3.0%	17.2%		
Net Requirement	168,958	168,958	6,930	10,929	-	8,425	-	-	(4,800)	190,442	21,484	
Percent of 2009 Net Requirement Budget			4.1%	6.5%	0.0%	5.0%	0.0%	0.0%	-2.8%	12.7%		
Full Time Equivalents (FTE's)	3,047.04	3,047.04	1.00	-	-	7.00	-	-	-	3,055.04	8.00	
Percent of 2009 FTE's			0.0%	0.0%	0.0%	0.2%	0.0%	0.0%	0.0%	0.3%		

City of Ottawa
Transit - Operating Resource Requirement Explanatory Notes
 In Thousands (\$000)

2009 Forecast vs. Budget Variance Explanation	Surplus / (Deficit)		
	Exp.	Rev.	Net
Forecast vs. Budget Variance Explanation			
Productivity Improvements of \$2.7M will not be achieved in 2009.	(2,700)	-	(2,700)
Savings of \$1.4M in Para Transpo, \$0.6M in fuel, \$0.4M in plant maintenance and \$1.9M in administrative costs are not expected to be repeated.	4,300	-	4,300
Maintenance costs are expected to be \$3.1M greater than budget	(3,100)	-	(3,100)
Transit Services is currently projecting higher average fare revenues relative to the revised budget as a result of riders selecting fewer discounts. This will generate a one-time revenue surplus of \$1.5M to year-end.	-	1,500	1,500
Total Surplus / (Deficit)	(1,500)	1,500	-

2009 Baseline Adjustments / Explanations	Increase / (Decrease)			FTE Impact
	Exp.	Rev.	Net 2010 Changes	
Adjustments to Base Budget				
Re-instatement of 2009 one-time base budget cost and revenue adjustments made in the revised 2009 operating budget due to the bus strike. On the expenditure side, costs are being increased by \$24.5M for bus operations, maintenance and fuel costs that were included in the original 2009 budget. On the revenue side, passenger revenues of \$39.1M lost because of the strike have been re-instated	24,530	(39,100)	(14,570)	-
In addition, \$6.7M in efficiency savings targets that were deferred due to the strike have been included while one-time funding of \$21.3M required due to the strike has been removed.	(6,715)	21,285	14,570	
Adjustment for 2009 budget shortfall in Collective Agreement provision.	4,168	-	4,168	-
Elimination of one-time transfer from reserves required for pension liabilities.	-	2,533	2,533	-
Loss in revenue as age of student Transpass users remains unlimited.	-	220	220	-
Hiring of a Labour Relations Specialist, as directed by Council Motion No. 62/6.	123	-	123	1.00
Corporate reorganization savings due to implementation of service excellence initiative.	(114)	-	(114)	-
Total Adjustments to Base Budget	21,992	(15,062)	6,930	1.00

City of Ottawa
Transit - Operating Resource Requirement Explanatory Notes
In Thousands (\$000)

2010 Pressure Category / Explanation	Increase / (Decrease)			FTE Impact
	Exp.	Rev.	Net 2010 Changes	
Maintain Services				
The OC Transpo Pension Plan is a closed pension plan that, in accordance with the requirements of the Pension Benefits Standards Act 1985, is required to file an actuarial valuation every three years and, if the plan has a solvency deficiency, for special payments to commence in order to return the plan to a solvent position. Due to the decline in the economic conditions in Canada and abroad, the OC Transpo Pension Plan is forecast to have a solvency deficiency at the end of 2009 and, as the next filing date is 2010, the City will be obligated to start making these special payments from January, 2010 .	8,100	-	8,100	-
Termination of past service cost amendment payments for the pension plan from prior years	(2,533)	-	(2,533)	-
All programs include an adjustment for 2010 contract settlements, increments and benefit adjustments.	5,526	-	5,526	-
Inflationary increase on diesel fuel: price increase from \$0.83 to \$0.87 on 44 million litres.	2,094	-	2,094	-
Transit Fleet PAYG Reserve contribution in accordance with the fiscal framework.	1,295	-	1,295	-
Para Transpo PAYG Reserve contribution to replace 91 passenger vans.	600	-	600	-
IT operating impact of capital projects.	275	-	275	-
Rail, Regulatory Safety & Development re-organization requirements.	270	-	270	-
Impacts of inflation on costs of hydro \$206K, rail maintenance \$70K, passenger tickets \$70K, and other non-compensation increases of \$94K.	440	-	440	-
Annualization of passenger fare increase July 1, 2009.	-	(5,138)	(5,138)	-
Revenue shortfall due to economic downturn and reduced ridership from lower employment levels.	-	8,804	8,804	-
One-time funding for the revenue shortfall due to economic downturn and reduced ridership from lower employment levels.	-	(8,804)	(8,804)	-
Total Maintain Services	16,067	(5,138)	10,929	-

City of Ottawa
Transit - Operating Resource Requirement Explanatory Notes
 In Thousands (\$000)

2010 Pressure Category / Explanation	Increase / (Decrease)			FTE Impact
	Exp.	Rev.	Net 2010 Changes	
Growth				
Annualization of the 2009 5.7% service increase: 64,000 service hours.	7,483	(2,750)	4,733	-
Operating impact of the new transit garage slated to open in Q2, 2010.	1,250	-	1,250	-
Maintenance costs of new Transitway Park & Ride lots at Millennium and Riverview.	665	-	665	2.00
Para Transpo 2% service increase to accommodate 20,000 additional passenger trips.	750	(25)	725	-
Maintenance for the West Transitway expansion opened Sept.09 Bayshore to Pinecrest. Labour, vehicle and material costs of \$99K for additional roadway maintenance plus \$150K for maintenance of the new tower at Bayshore, Pinecrest station and associated sidewalks.	249	-	249	-
Mystery Shopper, quality benchmarking and identification of transit industry best practices.	335	-	335	-
Transit Operations: 1 Timekeeper, 1 Sick Leave Tracking, 1 Records Management.	328	-	328	3.00
Transitway maintenance: 1 Building Service Attendant and one vehicle for 50 new shelters.	95	-	95	1.00
Service Design: Co-op students to develop expertise in transit planning for future recruitment.	45	-	45	1.00
Total Growth	11,200	(2,775)	8,425	7.00
User Fees & Charges				
See following user fee schedule for details on the specific rates.				
7.5% fare increase effective July 1, 2010 to assist in meeting an R/C ratio of 49.5%	-	(4,800)	(4,800)	-
Total User Fees & Charges	-	(4,800)	(4,800)	-
Total Budget Changes	49,259	(27,775)	21,484	8.00

**City of Ottawa
Transit - User Fees**

User Fees	2008 Rate	2009 Rate	2010 Rate	% Change Over		Effective Date	2010 Revenue
	\$	\$	\$	2009	2008	DD-MMM-YY	(\$000)
Transit Services							
Public Transit - Passenger Fares							
Regular Adult Pass/month	81.00	84.75	91.50	8.0%	13.0%	01-Jul-10	587
Express Adult Pass/month	101.00	106.00	114.00	7.5%	12.9%	01-Jul-10	155
Rural Adult Pass/month	126.00	131.75	141.75	7.6%	12.5%	01-Jul-10	12
Regular Student Pass/month	62.65	65.25	73.25	12.3%	16.9%	01-Jul-10	768
Express Student Pass/month	73.40	76.50	85.50	11.8%	16.5%	01-Jul-10	53
Regular Student Semester Pass	232.25	242.00	250.00	3.3%	7.6%	01-Jul-10	750
Express Student Semester Pass	271.90	283.50	290.00	2.3%	6.7%	01-Jul-10	113
Rural Student Pass/month	98.75	103.00	110.75	7.5%	12.2%	01-Jul-10	2
Senior Pass/month	30.40	31.75	36.00	13.4%	18.4%	01-Jul-10	131
Day Pass	7.25	7.00	7.50	7.1%	3.4%	01-Jul-10	59
Cash Adult/trip	3.00	3.00	3.25	8.3%	8.3%	01-Jul-10	156
Cash Express Route/trip	4.00	4.00	4.25	6.3%	6.3%	01-Jul-10	6
Cash Rural Express/trip	5.00	5.00	5.25	5.0%	5.0%	01-Jul-10	1
Cash Child (6-11 yrs.)/trip	1.50	1.50	1.60	6.7%	6.7%	01-Jul-10	15
Ticket Adult/trip	2.00	2.30	2.50	8.7%	25.0%	01-Jul-10	491
Ticket Express Route/trip	3.00	3.45	3.75	8.7%	25.0%	01-Jul-10	28
Ticket Rural Express/trip	4.00	4.60	5.00	8.7%	25.0%	01-Jul-10	4
Ticket Child (6-11 yrs)/trip	1.00	1.15	1.25	8.7%	25.0%	01-Jul-10	77
Regular Student Annual Pass	601.44	626.40	650.00	3.8%	8.1%	01-Jul-10	815
Express Student Annual Pass	704.64	734.40	762.00	3.8%	8.1%	01-Jul-10	42
Senior Annual Pass	364.80	381.00	395.00	3.7%	8.3%	01-Jul-10	1
Adult Regular Annual Pass	874.80	895.00	930.00	3.9%	6.3%	01-Jul-10	8
Adult Express Annual Pass	1,090.80	1,119.00	1,164.00	4.0%	6.7%	01-Jul-10	2
Adult Regular Ecopass/month	69.66	74.58	80.52	8.0%	15.6%	01-Jul-10	187
Adult Express Ecopass/month	86.86	93.28	100.32	7.5%	15.5%	01-Jul-10	137
Rural Ecopass/month	108.36	115.94	124.74	7.6%	15.1%	01-Jul-10	9
Senior Ecopass/month	26.14	27.94	31.68	13.4%	21.2%	01-Jul-10	1
Community Pass	30.40	30.40	32.00	5.3%	5.3%	01-Jul-10	13
O-Train Ticket/trip	2.25	2.50	2.75	10.0%	22.2%	01-Jul-10	50
Adult Photo I.D.	7.75	8.25	8.50	3.0%	9.7%	01-Jul-10	3
Student Photo I.D.	5.50	5.75	6.25	8.7%	13.6%	01-Jul-10	16
Charter Service							
First Hour	300.00	350.00	375.00	7.1%	25.0%	01-Jan-10	1
Each Additional Hour	175.00	175.00	190.00	8.6%	8.6%	01-Jan-10	1
Park & Ride Permit							
Regular	18.25	19.75	21.25	7.6%	16.4%	01-Jul-10	2
Gold Pass	42.00	45.00	48.50	7.8%	15.5%	01-Jul-10	4
Para Transpo Services							
Total Transit Services							4,800

City of Ottawa
Transit - Budget Options
 In Thousands (\$000)

Strategy Category	Branch	Program / Service Adjustment	2010 Options			
			Exp	Rev	Net Impact	FTE Impact
4	Transit	<u>Option</u> Reorganization of Bus Routes.	2,618	(436)	2,182	32.00
		<u>Impact on Public / City Departments</u> The reorganization of bus routes to be more productive and efficient would continue, making routes more direct to major destinations and more consistent by time of day. The changes would be similar to the changes that were made in the Alta Vista and Greenboro areas in 2008 and in the Britannia and Westboro areas and in Orleans east of Tenth Line in 2009. Changes of this type provide benefits for the majority of customers, but some customers will have a longer walk to their nearest bus stop or an additional transfer. These changes would be planned in late 2009, and consultation and approval consistent with Council policy would be carried out in early 2010, for introduction in September 2010. The following areas and routes would be reorganised: - Kanata - Combine Routes 62, 63, 64 into two express routes - Bells Corners - Combine Routes 69, 166 into one feeder route - Nepean - Change Route 67 into a feeder route - Central Nepean - Reorganise Routes 57, 86, 111, 117, 156 - South Ottawa - Change Route 43 into a feeder route - South Ottawa - Combine Routes 8 and 88 into a single route - Orléans - Combine Routes 37, 38, 39 into two express routes				

1 - New Revenue Opportunities	2 - Deferral of Proposed New Service Expenditures	3 - Deferral of Capital Projects	4 Adjustments to Existing Services
--------------------------------------	--	---	---

City of Ottawa
Transit - Budget Options
 In Thousands (\$000)

Strategy Category	Branch	Program / Service Adjustment	2010 Options			
			Exp	Rev	Net Impact	FTE Impact
		<i>cont'd</i> Service would be removed on the following routes at these times: - Route 16 west of Lincoln Fields - Mon-Fri eve; all day Sat, Sun - Route 18 west of Elgin - Evenings 7 days/wk - Route 87 Carlingwood-Downtown - Sun eve - Route 116 Lincoln Fields-Nortel - Mon-Fri peak periods - Route 127 Blair-Place d'Orléans - All day Sat - Route 128 - Sat, Sun mornings - Route 131 - Sat morning; all day Sun - Route 137 - Sat morning; all day Sun - Route 141 - All day Sat - Route 142 - Sat morning - Route 147 - Sat, Sun evenings - Route 149 - Mon-Fri eve; all day Sat, Sun - Route 151 Lincoln Fields-Carlingwood - Sun eve - Route 151 Tunney's-Westboro - Evenings 7 days/wk - Route 152 - Sun evening - Route 154 - Sat morning - Route 156 Carlingwood-Baseline/Clyde - Sat, Sun eve - Route 156 Carlingwood-Lincoln Fields - Mon-Sat evenings - Route 166 (southern part) - Evenings 7 days/wk - Route 171 - Mon-Fri eve; all day Sat, Sun - Route 173 - Mon-Fri eve; all day Sat, Sun - Route 174 Greenbank-Carlingwood - Evenings 7 days/wk - Route 178 - Mon-Fri evenings - Route 181 - Mon-Fri midday - Route 193 - Mon-Fri peak periods - Route 306 - Mon-Fri 08:30, 15:00, 15:30, 16:00 trips				

1 - New Revenue Opportunities	2 - Deferral of Proposed New Service Expenditures	3 - Deferral of Capital Projects	4 Adjustments to Existing Services
--------------------------------------	--	---	---

City of Ottawa
Transit - Budget Options
 In Thousands (\$000)

Strategy Category	Branch	Program / Service Adjustment	2010 Options			
			Exp	Rev	Net Impact	FTE Impact
4	OCTranspo	<u>Option</u> Service frequency adjustments.	818	-	818	12.00
		<u>Impact on Public / City Departments</u> The frequency of service would be reduced on busy routes on which ridership may have declined. Service has been increased on many routes over the past few years during peak travel times, according to observed ridership increases. Where ridership has declined, there is excess capacity now being operated, and that excess can be removed without causing overcrowding. Changes of this type will increase the waiting time slightly for customers, generally by increasing the interval between buses by two to five minutes. These changes would be planned based on the most recent ridership data available from the fall and winter of 2009-2010, and would be introduced in September 2010.				

1 - New Revenue Opportunities	2 - Deferral of Proposed New Service Expenditures	3 - Deferral of Capital Projects	4 Adjustments to Existing Services
--------------------------------------	--	---	---

City of Ottawa
Transit - Budget Options
 In Thousands (\$000)

Strategy Category	Branch	Program / Service Adjustment	2010 Options			
			Exp	Rev	Net Impact	FTE Impact
		<i>cont'd</i> Service would be made less frequent on the following routes (subject to confirmation based on new ridership counts): - Route 1 - Afternoon peak period (6 min to 7/8 min) - Route 7 - Afternoon peak period (6 min to 7/8 min) - Route 14 - Morning peak period (10 min to 12 min) - Route 60 - Morning peak period (8/9 min to 10 min) - Route 60 - Afternoon peak period (8/9 min to 10 min) - Route 66 - Morning peak period (10 min to 12 min) - Route 70 - Afternoon peak period (8/9 min to 10 min) - Route 71 - Afternoon peak period (10 min to 12 min) - Route 77 - Morning peak period (6/7 min to 7/8 min) - Route 77 - Afternoon peak period (6 min to 7/8 min) - Route 85 - Morning peak period (remove one trip) - Route 87 - Afternoon peak period (12 min to 15 min) - Route 94 - Morning peak period (5 min to 10 min in peak 30 min) - Route 94 - Afternoon peak pd (5 min to 10 min in peak 30 min) - Route 95 - Morning peak period (2 min 20 s to 2 min 30 s) - Route 106 - Morning peak period (6 min to 7/8 min) - Route 118 - Afternoon peak period (6 min to 7/8 min) - Route 172 - Morning peak period (remove one trip) - Route 176 - Morning peak period (12 min to 15 min)				

1 - New Revenue Opportunities	2 - Deferral of Proposed New Service Expenditures	3 - Deferral of Capital Projects	4 Adjustments to Existing Services
--------------------------------------	--	---	---

City of Ottawa
Transit - Budget Options
 In Thousands (\$000)

Strategy Category	Branch	Program / Service Adjustment	2010 Options			
			Exp	Rev	Net Impact	FTE Impact
4	Transit	<u>Option</u> Eliminate the addition of one Co-op student to develop expertise in transit planning for future recruitment.	45	-	45	1.00
		<u>Impact on Public / City Departments</u> Reduced capacity for transit service analysis and reduced ability to recruit future transit planning staff, thus impairing transit planning work in future years.				
4	Transit	<u>Option</u> Absorb the cost of maintaining 50 new Transitway bus shelters within existing resources.	95	-	95	1.00
		<u>Impact on Public / City Departments</u> Transit Services is responsible for cleaning and maintenance of shelters, which includes lighting and graffiti removal. Since 50 new shelters require maintenance, the impact of providing those services within existing resources, is that existing service level standards will decline.				
4	Transit	<u>Option</u> Absorb the cost of maintaining the new Transitway Park & Ride lots at Millenium and Riverview, wiithin existing resources. This includes snow removal, cleaning and lighting.	665	-	665	2.00
		<u>Impact on Public / City Departments</u> Transit Services is responsible for cleaning and maintenance of Park & Rides, which includes snow removal, cleaning and lighting. Reducing maintenance standards would create health, safety and security issues for customers.				

1 - New Revenue Opportunities	2 - Deferral of Proposed New Service Expenditures	3 - Deferral of Capital Projects	4 Adjustments to Existing Services
--------------------------------------	--	---	---

City of Ottawa
Transit - Budget Options
 In Thousands (\$000)

Strategy Category	Branch	Program / Service Adjustment	2010 Options			
			Exp	Rev	Net Impact	FTE Impact
4	Transit	<u>Option</u> Introduce the U Pass at Carleton & University of Ottawa in Sep. 2010 to all full-time graduate and undergraduates at a price of \$145 per semester. Would require service increases on certain busy routes outside peak periods.	(546)	(2,514)	(3,060)	(0.50)
		<u>Impact on Public / City Departments</u> Estimated shortfall to achieve revenue neutrality will be borne by the public. Crowding would increase on many routes. Service increases on the busiest routes outside peak periods would benefit all customers on those routes.				
4	Transit	<u>Option</u> Increase Para Transpo service to achieve an overall 5% increase and an additional 50,000 passengers in 2010.	(1,125)	38	(1,087)	(10.00)
		<u>Impact on Public / City Departments</u> Budget addition is in order to increase availability of service to clients.				
4	Transit	<u>Option</u> Implement measures to reduce the line-ups at public offices for customers purchasing monthly passes.	(62)	-	(62)	-
		<u>Impact on Public / City Departments</u> Reduced waiting times for Transit customers making purchases of monthly passes during peak periods of August, September and October.				
Total Budget Options			2,508	(2,912)	(404)	37.50

1 - New Revenue Opportunities	2 - Deferral of Proposed New Service Expenditures	3 - Deferral of Capital Projects	4 Adjustments to Existing Services
-------------------------------	---	----------------------------------	------------------------------------

City of Ottawa
Transit Committee - Capital Summary
 In Thousands (\$000)

2010 Draft Budget

Program	2010 Draft Capital Budget	Revenues	Tax Supported/Dedicated Reserves	Federal/Provincial Gas Tax	Development Charges	Debt
Renewal of Facilities & Equipment	27,201	-	16,626	7,675	-	2,900
Normal Transit System Growth	29,700	-	15,758	4,961	3,273	5,708
Buses-Growth, Replacement & Refurbishing	66,000	9,768	10,487	34,076	3,792	7,877
Park & Ride and Others	4,450		1,616	1,317	490	1,027
Light Rail Transit	82,267	49,512	14,331	1,540	10,333	6,551
Bus Rapid Transit	40,704	25,643	5,000	1,851	4,463	3,747
Transit Strategic Initiatives / Regulatory	6,270	-	3,700	2,570	-	-
Total	256,592	84,923	67,518	53,990	22,351	27,810
By Category						
Renewal of City assets	70,701	10,434	22,604	24,505	2,623	10,535
Growth	179,621	74,489	41,214	26,915	19,728	17,275
Strategic Initiatives	6,270	-	3,700	2,570	-	-
Total	256,592	84,923	67,518	53,990	22,351	27,810

City of Ottawa

Service Area: Transit Services

2010 Draft Budget

In Thousands (\$000)

Project Information			Financial Details			
905500 Bus Replacement						
Dept: Transit	Category: Renewal of City Assets	Ward: CW	Year of Completion:		2011	
<p>Replacements will be articulated or standard buses, low-floor accessible with air-conditioning. Program includes replacement of unique mini-bus as a predecessor to the future para-transit bus. It includes some modifications needed to meet operational requirements, such as urea dispenser. Program will allow for replacing the Duncan fareboxes on 346 LF buses. Provincially supported since 2002, the anticipated 33 percent subsidy is based on the published funding rules of the 2009 program. Should the 2011 program be reduced, refinancing will need to occur from City reserves, or the 2010 replacement program reduced accordingly. The reliability of the bus service and the cost of maintenance operations are dependent on timely renewal. Delays in replacement increases the current funding for refurbishment program. The current Duncan fare collection system will cease to be supportable, and ceasing of fare collection (10% of revenue) is not acceptable.</p>			2010 Request	29,600	Previous Authority	0
			Revenues	9,768	Rate Supported	-
			Tax Supported/ Dedicated	600	Development Charges	-
			Gas Tax	14,232	Debt	5,000
			Forecast	2010	2011	2012
			Authority	29,600	28,000	8,000
			Spending Plan		29,600	28,000
			FTE's			
			Operating Impact			
			905502 2010 Bus Refurbishment			
Dept: Transit	Category: Renewal of City Assets	Ward: CW	Year of Completion:		2011	
<p>This program is designed to extend the life of over 1,000 buses in the fleet from the manufacturer's average 12 year design life to the planned life cycle of 18 years. As buses near their ninth year, they are periodically appraised and scheduled for refurbishment according to best economic options. The extent of the refurbishment is dictated by the appraisals. Also included in this program are the parts and labour costs of rebuilding major powertrain components such as engines and transmissions. The refurbishment program complements the ongoing maintenance and repair functions and is an efficient and cost effective way of putting the optimum number of safe buses on the road daily. Failure to do this work would result in fewer buses for revenue service.</p>			2010 Request	2,000	Previous Authority	0
			Revenues	-	Rate Supported	-
			Tax Supported/ Dedicated	100	Development Charges	-
			Gas Tax	1,500	Debt	400
			Forecast	2010	2011	2012
			Authority	2,000	7,250	18,175
			Spending Plan	2,000	7,250	18,175
			FTE's			
			Operating Impact			

City of Ottawa

Service Area: Transit Services

2010 Draft Budget

In Thousands (\$000)

Project Information		Financial Details			
905507 Bus Growth					
Dept: Transit	Category: Growth	Ward: CW	Year of Completion:		2011
<p>Transit System growth of 4% is expected for 2011. The request reflects this increase in fleet size to meet operational needs of the annual transit service expansion. 43 high-capacity units will be purchased.</p> <p>Failure to proceed with this growth would make other network growth unsupportable.</p>		2010 Request	34,400	Previous Authority	0
		Revenues	-	Rate Supported	-
		Tax Supported/ Dedicated	9,787	Development Charges	3,792
		Gas Tax	18,344	Debt	2,477
		Forecast	2010	2011	2012
		Authority	34,400	35,200	32,000
		Spending Plan		34,400	35,200
		FTE's		60	118
		Operating Impact		8,792	10,092

City of Ottawa

Service Area: Transit Services

2010 Draft Budget

In Thousands (\$000)

Project Information		Financial Details			
903780 Transit Garage Rationalization					
Dept: Transit Services	Category: Growth	Ward: City Wide	Year of Completion:	2010	
<p>Replacements will be articulated or standard buses, low-floor accessible with air-conditioning.</p> <p>The original scope of the project has evolved to include new ways/functions for conducting dispatching and maintenance of the bus fleet. This project will bring together new technology required to operate the overall Industrial Avenue site.</p> <p>New IT technology would include fluid management, dispatching and placing buses. Tool management systems and commissioning of the new site. E.A./Environmental issues</p>		2010 Request	17,000	Previous Authority	80,363
		Revenues	-	Rate Supported	-
		Tax Supported/ Dedicated	12,999	Development Charges	1,873
		Gas Tax	660	Debt	1,468
		Forecast	2010	2011	2012
		Authority	17,000	-	-
		Spending Plan	17,000		
		FTE's			
		Operating Impact			
		905439 2010 Transit Priority Corridors			
Dept: Planning and Growth Management	Category: Growth	Ward: CW	Year of Completion:	2012	
<p>The need to develop transit priority corridors and divert passenger trips from the Central-area Transitway (Albert-Slater Streets) towards other arterial corridors has become apparent in recent years. To allow for continued growth and expansion of the transit network, moving cross-town passengers efficiently along arterial corridors is increasingly important as traffic congestion in the core continues to affect transit service reliability during peak periods.</p> <p>Funds in 2010 are for the planning and implementation of transit priority measures that will focus on reducing delays and improving service reliability for transit customers along the following arterial corridors: 1. Carling Avenue, 2. Montreal Road, 3. St. Laurent Boulevard & 4. Baseline-Heron Roads.</p>		2010 Request	1,000	Previous Authority	0
		Revenues	-	Rate Supported	-
		Tax Supported/ Dedicated	-	Development Charges	110
		Gas Tax	521	Debt	369
		Forecast	2010	2011	2012
		Authority	1,000	2,000	2,000
		Spending Plan	1,000	2,000	2,000
		FTE's			
		Operating Impact			

City of Ottawa

Service Area: Transit Services

2010 Draft Budget

In Thousands (\$000)

Project Information		Financial Details			
905440 2010 Transit Priority Measures					
Dept: Planning and Growth Management	Category: Growth	Ward: CW	Year of Completion:		2012
<p>Transit priority measures refer to traffic engineering strategies that provide priority to transit vehicles in mixed traffic. The objective is to reduce travel time and travel time variability for transit customers travelling along mixed flow roadways. Since the majority of transit services are on mixed flow roadways where 20 to 40% of the scheduled time is unproductive (traffic congestion, delays at traffic signals, time points), the potential for improvement is substantial. Transit priority measures reduce travel times, resulting in operational and capital cost savings to the City. Reduced transit travel times and improved schedule adherence have a direct positive impact on transit ridership and transit modal share. The Transportation Master Plan calls for the implementation of transit priority measures on the Transit Priority Network, as well as in future rapid transit corridors as a means of incremental implementation.</p>		2010 Request	1,600	Previous Authority	0
		Revenues	-	Rate Supported	-
		Tax Supported/ Dedicated	-	Development Charges	176
		Gas Tax	814	Debt	610
		Forecast	2010	2011	2012
		Authority	1,600	1,600	1,600
		Spending Plan	1,600	1,600	1,600
		FTE's			
		Operating Impact			
		905492 2010 Transitway Stations			
Dept: Transit Services	Category: Renewal of City Assets	Ward: Citywide	Year of Completion:		2012
<p>To undertake improvements at Transitway Stations in order to provide for safety modifications, to reduce travel times, to improve bus reliability, to undertake unforeseen minor platform improvements and to assist in reducing transit operating costs. Specifically, work will include the construction of improvements at Hurdman Station, which will allow for greater capacity, safer bus operations and better operational efficiencies until LRT is provided. Work will also include an upgraded driver's facilities at Hurdman Station. At other main transfer Transitway stations, including Hurdman, Lincoln Fields, Rideau and Tunney's Pasture, work will also be included to provide upgraded customer information facilities.</p>		2010 Request	4,100	Previous Authority	
		Revenues	-	Rate Supported	-
		Tax Supported/ Dedicated	2,000	Development Charges	452
		Gas Tax	866	Debt	782
		Forecast	2010	2011	2012
		Authority	4,100	-	-
		Spending Plan	2,000	2,100	
		FTE's			
		Operating Impact			

City of Ottawa

Service Area: Transit Services

2010 Draft Budget

In Thousands (\$000)

Project Information		Financial Details			
905493 2010 Transit Network Capital Projects					
Dept: Transit Services	Category: Renewal of City Assets	Ward: City wide	Year of Completion: 2012		
<p>To undertake improvements at bus stops throughout the network, not along the Transitway, in order to provide for safety modifications, to reduce travel times, to improve bus reliability, to undertake bus stop improvements, to assist in reducing transit operating costs and to improve the customer experience.</p> <p>Specifically, works in this project will include the construction of a new bus loop in Kanata North, a bus lay-by at the Blackburn By-pass, the provision of 50 new bus shelters, improvements to 50 existing bus pads and the provision of 20 bus pads at new locations.</p>	2010 Request	800	Previous Authority		
	Revenues	-	Rate Supported	-	
	Tax Supported/ Dedicated	590	Development Charges	88	
	Gas Tax	-	Debt	122	
	Forecast	2010	2011	2012	
	Authority	800	-	-	
	Spending Plan	750	50		
	FTE's				
	Operating Impact				
	905499 Miscellaneous Vehicle Growth				
Dept: Transit	Category: Growth	Ward: CW	Year of Completion: 2011		
<p>Transit System growth over several years has imposed an increase in maintenance activities for facilities and transit infrastructure. The request reflects a modest increase in miscellaneous vehicles to support transit service annual expansions.</p> <p>One (1) light duty and one (1) heavy duty vehicle will be purchased. Failure to proceed with this growth would make other network growth unsupportable.</p>	2010 Request	200	Previous Authority		
	Revenues	-	Rate Supported	-	
	Tax Supported/ Dedicated	64	Development Charges	22	
	Gas Tax	100	Debt	14	
	Forecast	2010	2011	2012	
	Authority	200	80	120	
	Spending Plan	75	205	80	
	FTE's				
	Operating Impact	25	113	25	

City of Ottawa

Service Area: Transit Services

2010 Draft Budget

In Thousands (\$000)

Project Information		Financial Details			
905604 Hunt Club Pedestrian Overpass					
Dept: Planning and Growth Management	Category: Growth	Ward: 16	Year of Completion:		2012
<p>This project would provide a safe, secure and direct pedestrian connection between the Hunt Club Community and the Southeast Transitway at the South Keys and/or Greenboro stations. This will involve an east-west connection that crosses the Airport Parkway and the future North-South LRT rail line. It will also incorporate part of the existing multi-use pathway that surrounds the Sawmill Creek Constructed Wetlands and consequently it will afford additional access to this facility. (ISF 905312 will fund north-south access to these wetland pathways from Hunt Club Road and Walkley Road.) Linking the Hunt Club area on the west to rapid transit, neighbouring communities and shopping areas to the east is supported in the direction/policies found in the Ottawa Pedestrian Plan, the Ottawa Cycling Plan and the Hunt Club Secondary Plan (part of the Official Plan).</p>	2010 Request	5,000	Previous Authority	0	
	Revenues	-	Rate Supported	-	
	Tax Supported/ Dedicated	105	Development Charges	552	
	Gas Tax	2,000	Debt	2,343	
	Forecast	2010	2011	2012	
	Authority	5,000	-	-	
	Spending Plan	5,000			
	FTE's				
Operating Impact					

Project Information	Financial Details		
---------------------	-------------------	--	--

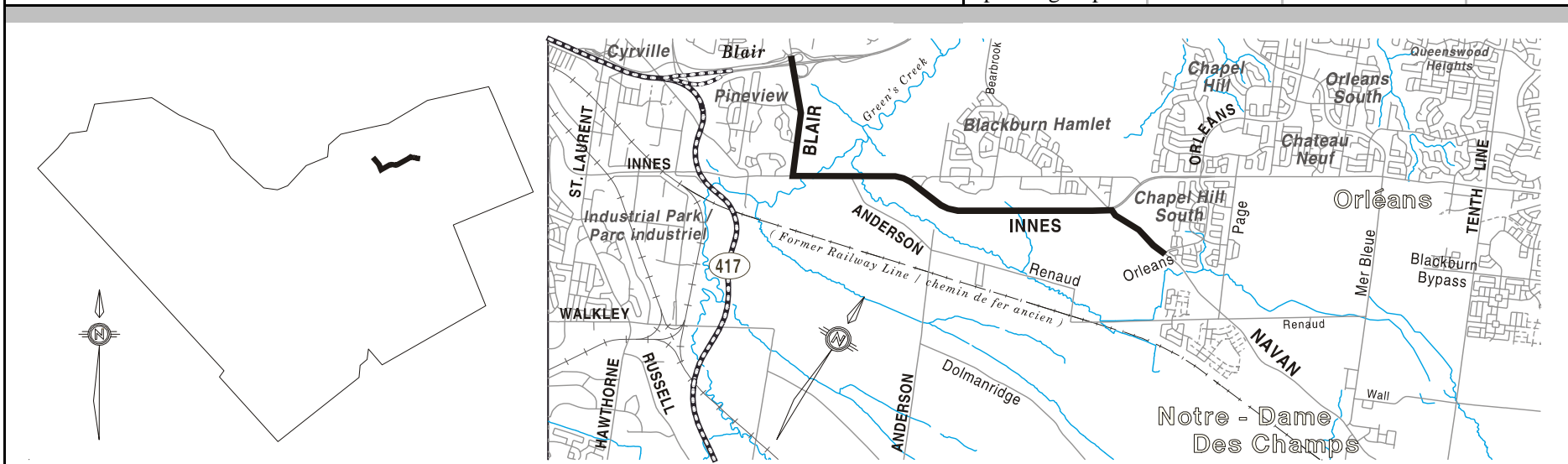
903279 Cumberland Transitway (Navan to Blair Station)

Dept: Planning and Growth Management	Category: Growth	Ward: 2	Year of Completion: 2014
--------------------------------------	------------------	---------	--------------------------

The Cumberland Transitway (Navan to Blair Station) is required to provide high quality transit access to the rapidly growing East Urban Community. This project is a priority Phase 1, Increment 1, rapid transit project in the Transportation Master Plan. The funding in 2010 is for preliminary and detailed designs. Construction is planned to begin in 2012.

This project will not proceed without a commitment from our funding partners at the Provincial and Federal levels.

2010 Request	2,464	Previous Authority	0
Revenues	1,643	Rate Supported	-
Tax Supported/ Dedicated	-	Development Charges	270
Gas Tax	282	Debt	269
Forecast	2010	2011	2012
Authority	2,464	-	45,830
Spending Plan	600	1,800	6,500
FTE's			
Operating Impact			



City of Ottawa

Service Area: Transit Services

2010 Draft Budget

In Thousands (\$000)

Project Information	Financial Details		
---------------------	-------------------	--	--

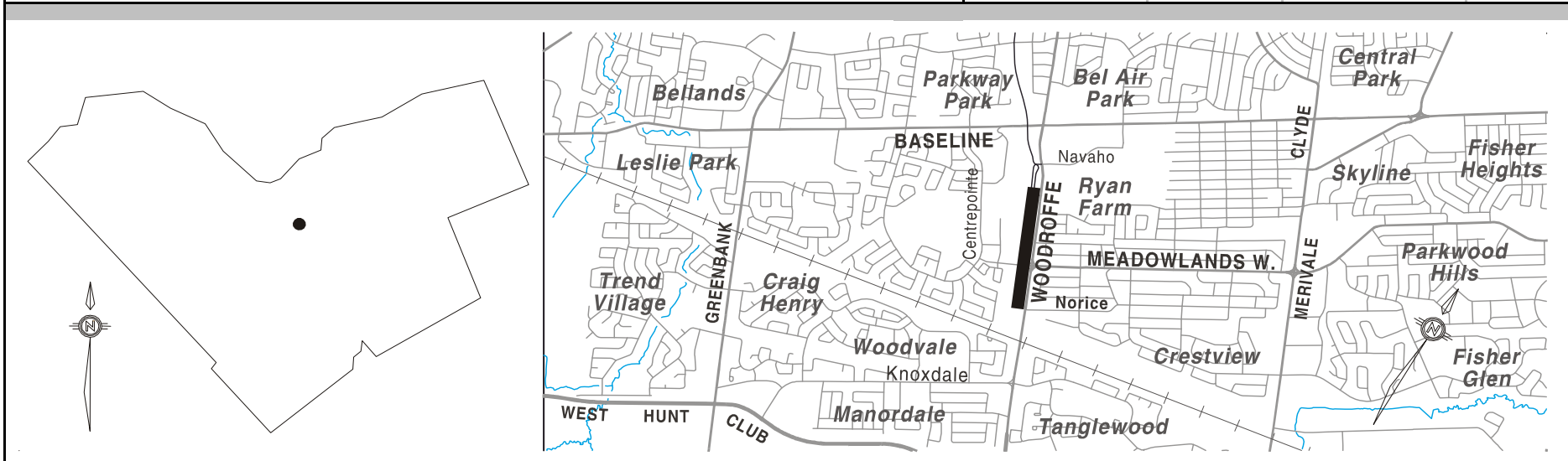
904683 SW Transitway (Baseline to Norice)

Dept: Planning and Growth Management	Category: Growth	Ward: 8	Year of Completion: 2015
--------------------------------------	------------------	---------	--------------------------

Council approved the Centrepointe Town Centre - Baseline Station/Transitway Functional Design and Algonquin /City Archives Projects in November 2008. These projects facilitate the integration of the Southwest Transitway corridor (Baseline to Norice) with the Centrepointe Town Centre Plan, including service to the proposed Algonquin College's Centre for Construction Excellence (ACCE) building and proposed City's Central Archives and Library Technical Services building. The integration of these facilities must be staged. Funds in 2010 will be required for the detail design and construction of the Tallwood Dr. underpass, Tallwood storm Sewer bypass, Tallwood watermain relocation, Tallwood station, the storm water management between Tallwood Dr and College Avenue and detail design of BRT between College Avenue and Norice.

This project will not proceed without a commitment from our funding partners at the Provincial and Federal levels.

2010 Request	35,000	Previous Authority	25,350
Revenues	23,334	Rate Supported	-
Tax Supported/ Dedicated	5,000	Development Charges	3,836
Gas Tax	425	Debt	2,405
Forecast	2010	2011	2012
Authority	35,000	55,000	15,000
Spending Plan	24,000	45,000	45,000
FTE's			
Operating Impact			



City of Ottawa

Service Area: Transit Services

2010 Draft Budget

In Thousands (\$000)

Project Information		Financial Details			
905177 - Transit Priority Network (Woodroffe and Baseline Corridors)					
Dept: Planning and Growth Management	Category: Growth	Ward: 22	Year of Completion:	2012	
<p>This submission is for planning, environmental assessment studies and implementation work for the elements of the Transportation Master Plan's Supplementary Transit Network:</p> <ol style="list-style-type: none"> 1. Woodroffe South-Strandherd to Earl Armstrong (transit priority measures) 2. Baseline-Heron-Walkey-Russell-St.Laurent (interim transit priority measures) <p>Transit priority measures include peak-period transit-only lanes, short dedicated lane segments, queue-jumps, bus bay removals, localized road widening, traffic signal priority and other measures that can be implemented incrementally along a corridor.</p>		2010 Request	2,240	Previous Authority	0
		Revenues	-	Rate Supported	-
		Tax Supported/ Dedicated	-	Development Charges	247
		Gas Tax	1,039	Debt	954
		Forecast	2010	2011	2012
		Authority	2,240	-	-
		Spending Plan	1,120	1,120	
		FTE's			
		Operating Impact			
905183 TMP Supplementary Transit Network					
Dept: Planning and Growth Management	Category: Renewal of City Assets	Ward: CW	Year of Completion:	2012	
<p>The Transportation Master Plan identified a Supplementary Transit Network comprised of Transit Intensive and Transit Priority facilities. Transit intensive measures include all-day, dedicated, continuous exclusive transit facilities for use by buses or trains, operating at grade with priority at signalized intersections. Transit priority measures include peak-period transit-only lanes, short dedicated lane segments, queue-jumps, bus bay removals, localized road widening, traffic signal priority and other measures that can be implemented incrementally along a corridor. This submission provides for planning work of the full Supplementary Transit Network and the implementation of transit priority measures (permanent and/or of an interim nature in advance of the ultimate facility).</p> <p>This project will not proceed without a commitment from our funding partners at the Provincial and Federal levels.</p>		2010 Request	1,000	Previous Authority	500
		Revenues	666	Rate Supported	-
		Tax Supported/ Dedicated	-	Development Charges	110
		Gas Tax	105	Debt	119
		Forecast	2010	2011	2012
		Authority	1,000	12,000	13,000
		Spending Plan	1,000	12,000	13,000
		FTE's			
		Operating Impact	47	370	400

City of Ottawa
Service Area: Transit Services
In Thousands (\$000)

2010 Draft Budget

Project Information	Financial Details
---------------------	-------------------

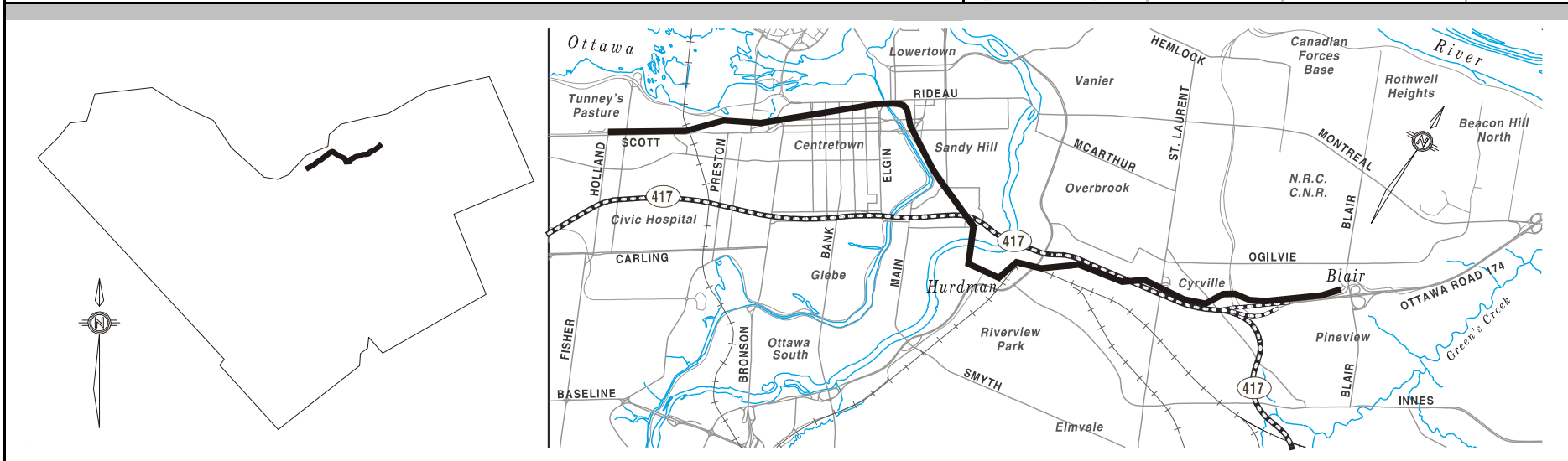
905176 LRT (Tunney's to Blair, rail yards & Nicholas)

Dept: Planning and Growth Management	Category: Growth	Ward: CW	Year of Completion: 2016
--------------------------------------	------------------	----------	--------------------------

In May 2008, Council approved the implementation of Light Rail Transit (LRT) from Blair Station to Tunney's Pasture Station, including a downtown transit tunnel and a light rail maintenance and storage facility. This project is required to address congestion through the downtown core and to increase the capacity of the transit system to accommodate future transit ridership. The Downtown Ottawa Transit Tunnel (DOTT) alignment and station locations were approved by Council in May 2009. Funds in 2010 will be required for preliminary engineering, procurement management and professional services.

This project will not proceed without a commitment from our funding partners at the Provincial and Federal levels.

2010 Request	74,267	Previous Authority	0
Revenues	49,512	Rate Supported	-
Tax Supported/ Dedicated	11,000	Development Charges	8,140
Gas Tax	413	Debt	5,202
Forecast	2010	2011	2012
Authority	74,267	127,434	40,974
Spending Plan	74,276	127,434	40,974
FTE's			
Operating Impact			



City of Ottawa

Service Area: Transit Services

2010 Draft Budget

In Thousands (\$000)

Project Information		Financial Details			
905245 Light Rail Transit Office					
Dept: DCMO - ISCS	Category: Renewal of City Assets	Ward: CW	Year of Completion: 2019		
<p>In November of 2008, City Council approved an updated Transportation Master Plan that included phasing plans for transit projects. This budget reflects Phase 1, Increment 1 for TMP Transit Infrastructure Projects. During 2009, Council approved the allocation of a \$1M budget for the creation of a Rail Implementation Office. This budget reflects the ongoing implementation of a Rail Implementation Office as outlined in the Critical Path Report provided to Council in September of 2009. The Critical Path Report identified project elements that must proceed in order to implement TMP Phase 1, Increment 1, according to expected timelines. Critical project elements include preliminary engineering, output specifications, RFQ, RFP, land acquisition, selection of technology, selection of a procurement model, resolution of a regulatory model and more. These costs also include staffing, advisory services and contingency. Failure to approve this request will result in a delayed project implementation date.</p>		2010 Request	6,000	Previous Authority	1,000
		Revenues	-	Rate Supported	-
		Tax Supported/ Dedicated	2,688	Development Charges	1,973
		Gas Tax	127	Debt	1,212
		Forecast	2010	2011	2012
		Authority	6,000	6,000	6,000
		Spending Plan	6,000	6,000	6,000
		FTE's			
		Operating Impact			
905435 Rapid Transit EA Studies 2010					
Dept: Planning and Growth Management	Category: Growth	Ward: CW	Year of Completion: 2012		
<p>The required first step to implement the rapid transit network expansion is the completion of Environmental Assessment (EA) studies for the individual corridor projects that comprise the overall network. This project directly addresses the strategic direction of the Transportation Master Plan to attain a 30 per cent transit modal split by 2031, and to require transit-oriented communities to achieve a sustainable, healthy and active City.</p>		2010 Request	2,000	Previous Authority	0
		Revenues	-	Rate Supported	-
		Tax Supported/ Dedicated	643	Development Charges	220
		Gas Tax	1,000	Debt	137
		Forecast	2010	2011	2012
		Authority	2,000	2,000	1,000
		Spending Plan	2,000	2,000	1,000
		FTE's			
		Operating Impact			

City of Ottawa

Service Area: Transit Services

2010 Draft Budget

In Thousands (\$000)

Project Information		Financial Details			
905433 Park and Ride Expansion Program - Studies					
Dept: Planning and Growth Management	Category: Growth	Ward: CW	Year of Completion:		2012
<p>This submission is for studies to explore a variety of options or possible solutions to alleviate the capacity shortage being experienced at certain Park & Ride facilities. The existing park-and-ride lots are very popular and many are fully utilized on a daily basis, even accommodating vehicles well above their design limit.</p> <p>The Official Plan and Transportation Master Plan include several requirements to achieve transit modal split targets and commit Council to provide strategically located Park & Ride lots to provide access to urban transit for commuters from the rural areas as well as from the urban area. This project supports Council Strategic Directions for the City of achieving 30% modal split target by 2031.</p>	2010 Request	50	Previous Authority	0	
	Revenues	-	Rate Supported	-	
	Tax Supported/ Dedicated	16	Development Charges	6	
	Gas Tax	25	Debt	3	
	Forecast	2010	2011	2012	
	Authority	50	100	50	
	Spending Plan	50	100	50	
	FTE's				
	Operating Impact				
	905434 Park and Ride Facilities 2010				
Dept: Planning and Growth Management	Category: Growth	Ward: CW	Year of Completion:		2012
<p>This is an annual program to increase the capacity of the existing lots and to construct new Park and Ride (P&R) lots. The P&R lot sites are in various stages of conceptual, preliminary and detail designs and construction.</p> <p>Providing P&R facilities will improve transit accessibility and promotes use of transit which helps alleviate vehicle traffic demand on roads and postpone the requirement for road construction. It supports Council Strategic Directions for the City of achieving 30% transit modal split target by 2031.</p>	2010 Request	2,000	Previous Authority	0	
	Revenues	-	Rate Supported	-	
	Tax Supported/ Dedicated	1,600	Development Charges	220	
	Gas Tax	20	Debt	160	
	Forecast	2010	2011	2012	
	Authority	2,000	2,000	2,000	
	Spending Plan	2,000	2,000	2,000	
	FTE's				
	Operating Impact				

City of Ottawa

Service Area: Transit Services

2010 Draft Budget

In Thousands (\$000)

Project Information		Financial Details			
905436 Transit Corridor Protection 2010					
Dept: Planning and Growth Management	Category: Growth	Ward: CW	Year of Completion:		2012
<p>This submission is to provide for the necessary funds to purchase strategic property parcels to protect for future transit or roadway corridors and facilities as they become available. Although the opportunity to protect for future corridors and facilities is, for the most part, achieved by land dedication as a condition of development, it is essential on occasion to acquire select properties in critical areas to maintain corridor integrity. Included in this corridor protection strategy is the acquisition of surplus railway rights-of-way and select utility corridors that become available. This pre-approved funding envelope will allow the City to act proactively to reduce future liability for property acquisition/protection and mitigation requests.</p>	2010 Request	2,000	Previous Authority	0	
	Revenues	-	Rate Supported	-	
	Tax Supported/ Dedicated	-	Development Charges	220	
	Gas Tax	943	Debt	837	
	Forecast	2010	2011	2012	
	Authority	2,000	2,000	2,000	
	Spending Plan	2,000	2,000	2,000	
	FTE's				
	Operating Impact				
	905437 Transportation Master Plan 2010				
Dept: Planning and Growth Management	Category: Growth	Ward: CW	Year of Completion:		2012
<p>This project is for work stemming from the Transportation Master Plan (TMP) such as conducting of transportation policy studies, programs and guidelines to provide regular, meaningful insight into future transportation conditions. This would include work on the Westboro Community / Richmond Road Transportation Management Implementation Plan.</p>	2010 Request	400	Previous Authority	0	
	Revenues	-	Rate Supported	-	
	Tax Supported/ Dedicated	-	Development Charges	44	
	Gas Tax	329	Debt	27	
	Forecast	2010	2011	2012	
	Authority	400	400	500	
	Spending Plan	400	400	500	
	FTE's				
	Operating Impact				

City of Ottawa

Service Area: Transit Services

2010 Draft Budget

In Thousands (\$000)

Project Information		Financial Details			
904769 - Central Area Station Improvements					
Dept: Transit Services	Category: Renewal of City Assets	Ward: 12 and 14	Year of Completion: 2011		
To improve central area Transitway bus stops in order to improve bus operating efficiencies and passenger waiting areas.	2010 Request		1,600	Previous Authority	1,666
	Revenues	-	Rate Supported	-	-
	Tax Supported/ Dedicated	-	Development Charges	-	-
	Gas Tax	600	Debt	1,000	-
	Forecast	2010	2011	2012	
	Authority	1,600	-	-	
	Spending Plan	1,000	600		
	FTE's				
	Operating Impact				
	905152 Building Capacity Improvement				
Dept: Transit Services	Category: Renewal of City Assets	Ward: City Wide	Year of Completion: 2013		
<p>Building Capacity - The work includes rehabilitation, upgrade and fitup of interior components of OC facilities.</p> <p>Hygiene Improvement - To undertake improvements to employee hygiene by upgrade and rehabilitation of shared facilities including lunch areas, showers/locker rooms and station hygiene areas in garages and along the transitway to accommodate OC employees.</p>	2010 Request		6,000	Previous Authority	3,644
	Revenues	-	Rate Supported	-	-
	Tax Supported/ Dedicated	3,000	Development Charges	-	-
	Gas Tax	3,000	Debt	-	-
	Forecast	2010	2011	2012	
	Authority	6,000	-	-	
	Spending Plan	6,000			
	FTE's				
	Operating Impact				

Project Information			Financial Details			
905159 IT Transit Giro Scheduling Software						
Dept: Transit Services	Category: Renewal of City Assets	Ward: CW	Year of Completion:		2011	
<p>Replacement of Hastus scheduling software suite version 2006, with 2010 edition.</p> <p>Hastus transit products from Giro are used in many transit business areas: scheduling, customer service, performance analysis, work management, public web information.</p> <p>Product renewal and development are planned on a 3-4 year cycle; previous upgrades were 2002 and 2006; new modules were added in 2009. The 2010 upgrade is required to maintain favourable support and maintenance status, maintain currency with computing operating environment, and provide access to business application efficiencies and improvements.</p> <p>2009 installation included bus stop schedule print module to replace legacy software, and an ATP runtime analysis module, and an upgrade to the website interface API.</p>			2010 Request	550	Previous Authority	470
			Revenues	-	Rate Supported	-
			Tax Supported/ Dedicated	300	Development Charges	-
			Gas Tax	250	Debt	-
			Forecast	2010	2011	2012
			Authority	550	-	300
			Spending Plan	550		
			FTE's			
			Operating Impact			
			905160 Transit Communications			
Dept: transit Services	Category: Renewal of City Assets	Ward: CW	Year of Completion:		2012	
<p>Contribution towards centralized solution to provide call recording software on transit information, customer service, and Para Transpo telephone centre switch. Call recording is required to improve agent training; provide quality assurance, and to support investigation of historic enquiries or service complaints. Cdn Transportation Agency settlement in 2007 identified requirement to install recording facility in the customer service office.</p> <p>Replacement of unsupported legacy IVR software, integrated with giro scheduling database. Replacement of legacy schedule video displays in transit stations. Provision of e-services on octranspo.com, including customer contacts, and SMS text service alerts.</p>			2010 Request	275	Previous Authority	800
			Revenues	-	Rate Supported	-
			Tax Supported/ Dedicated	125	Development Charges	-
			Gas Tax	150	Debt	-
			Forecast	2010	2011	2012
			Authority	275	200	50
			Spending Plan	275	200	50
			FTE's			
			Operating Impact			

City of Ottawa

Service Area: Transit Services

2010 Draft Budget

In Thousands (\$000)

Project Information		Financial Details			
905490 2010 Transitway System Improvements					
Dept: Transit Services	Category: Renewal of City Assets	Ward: Citywide	Year of Completion: 2012		
<p>To undertake improvements to the transit network in order to provide for safety modifications, to reduce travel times, to improve bus reliability, to undertake unforeseen minor platform work. Specifically, works in this project will include the installation of an operator's facility at Westboro Station and improvements to the pedestrian underpass at Campus Station.</p>		2010 Request	750	Previous Authority	
		Revenues	-	Rate Supported	-
		Tax Supported/ Dedicated	550	Development Charges	-
		Gas Tax	100	Debt	100
		Forecast	2010	2011	2012
		Authority	750	640	660
		Spending Plan	500	890	660
		FTE's			
		Operating Impact			
		905491 2010 Transitway Capital Projects			
Dept: Transit Services	Category: Renewal of City Assets	Ward: Citywide	Year of Completion: 2012		
<p>Works for these projects include the fitup, upgrade and rehabilitation to station electrical, mechanical and communication operation infrastructure, glazing modifications and refinishing, installation of new emergency communication equipment, the installation of surveillance systems at Transitway Stations, signage improvements and minor facility upgrades for accessibility requirements.</p> <p>Specifically, works in the project will include the fit-up of the Chapel Hill park-n-Ride and Longfields Station, which will be completed in September, 2010. Other projects will be completed according to an operational response nature.</p>		2010 Request	1,000	Previous Authority	
		Revenues	-	Rate Supported	-
		Tax Supported/ Dedicated	800	Development Charges	-
		Gas Tax	100	Debt	100
		Forecast	2010	2011	2012
		Authority	1,000	1,000	1,000
		Spending Plan	750	1,250	1,000
		FTE's			
		Operating Impact			

City of Ottawa

Service Area: Transit Services

2010 Draft Budget

In Thousands (\$000)

Project Information			Financial Details				
905494 Transit Facilities Lifecycle							
Dept: Transit Services	Category: Renewal of City Assets	Ward: City Wide	Year of Completion:		2012		
<p>This Program works to ensure that buildings provide continuous uninterrupted support for Transit Services. Through this lifecycle renewal program, a specific plan is established for each facility based on planned use strategic asset management reviews, validated condition of the building as well as input from Transit staff.</p> <p>The capital program entails a wide assortment of major repairs and replacement work, including roofing and glazing systems, elevators, ventilation structures, and specialty systems etc. Condition audits of the asset inventory also form part of the planned program to insure lifecycle renewal projects are documented and implemented in accordance with stated priorities.</p>	2010 Request		2,000	Previous Authority			
	Revenues		-	Rate Supported		-	
	Tax Supported/ Dedicated		1,000	Development Charges		-	
	Gas Tax		1,000	Debt		-	
	Forecast		2010	2011	2012		
	Authority		2,000	-	-		
	Spending Plan		2,000				
	FTE's						
	Operating Impact						
	905498 Miscellaneous Vehicle Replacement						
Dept: Transit	Category: Renewal of City Assets	Ward: CW	Year of Completion:		2011		
<p>Over 250 miscellaneous support vehicles are used in Transit Services daily operations including security, supervision, maintenance, stores, revenue generation and others. The fleet has light and heavy vehicles and numerous equipment with various life cycles: 3 to 15 years or more.</p> <p>The reliability of the bus service is dependent in part on timely renewal of these vehicles. The level of funding is required to maintain operational effectiveness and to rejuvenate the aging fleet. Twelve (12) light vehicles, seven (7) heavy vehicles and one urea dispensing system will be purchased to support the after-exhaust treatment technology being introduced with diesel engines in 2010.</p> <p>Further delays in replacement decreases the ability to provide revenue service at low-cost ratio to the taxpayers and users of the service.</p>	2010 Request		1,577	Previous Authority			
	Revenues		-	Rate Supported		-	
	Tax Supported/ Dedicated		1,477	Development Charges		-	
	Gas Tax		-	Debt		100	
	Forecast		2010	2011	2012		
	Authority		1,577	1,300	1,300		
	Spending Plan		500	1,800	1,200		
	FTE's						
	Operating Impact						

City of Ottawa

Service Area: Transit Services

2010 Draft Budget

In Thousands (\$000)

Project Information		Financial Details			
905501 IT 2010 Computer Hardware & Software					
Dept: Transit	Category: Renewal of City Assets	Ward: CW	Year of Completion: 2012		
In support of the JLA Roadmap to realize efficiencies within the Maintenance area, M5 software upgrades and additional and/or upgraded hardware will be deployed in the various existing facilities.		2010 Request	250	Previous Authority	
		Revenues	-	Rate Supported	-
		Tax Supported/ Dedicated	125	Development Charges	-
		Gas Tax	125	Debt	-
		Forecast	2010	2011	2012
		Authority	250	400	820
		Spending Plan	250	400	820
		FTE's			
		Operating Impact			
		905503 2010 Train & Rail Lifecycle			
Dept: Transit	Category: Renewal of City Assets	Ward: City Wide	Year of Completion: 2010		
O-Train Life Cycle upgrades are divided into two categories: - Train mechanical components including: engine overhauls, transmissions, gearboxes, train jacks and propulsion system - Structure and corridor works including: Rideau River bridge rail deck and alignment, bridge and switch tie replacement program		2010 Request	3,029	Previous Authority	
		Revenues	-	Rate Supported	-
		Tax Supported/ Dedicated	1,529	Development Charges	-
		Gas Tax	1,500	Debt	-
		Forecast	2010	2011	2012
		Authority	3,029	67	986
		Spending Plan	3,029	67	986
		FTE's			
		Operating Impact			

City of Ottawa

Service Area: Transit Services

2010 Draft Budget

In Thousands (\$000)

Project Information		Financial Details		
905671 LCR - Transit				
Dept: Infrastructure Services	Category: Renewal of City Assets	Ward: CW	Year of Completion: 2010	
<p>This capital program is intended to address life cycle renewal (replacement) of building and site assets within the City's Transit Facilities. A wide assortment of work, such as, roof replacement, mechanical and electrical systems, site elements, interior finishes, form the bulk of this capital program. Funding will be allocated to identified projects, as well as, for unplanned and emergency work.</p>	2010 Request	3,850	Previous Authority 3,850	
	Revenues	-	Rate Supported -	
	Tax Supported/ Dedicated	3,850	Development Charges -	
	Gas Tax	-	Debt -	
	Forecast	2010	2011	2012
	Authority	3,850	-	-
	Spending Plan	3,850		
	FTE's			
	Operating Impact			

City of Ottawa

Service Area: Transit Services

In Thousands (\$000)

2010 Draft Budget

Project	Ward	Location/Description	\$000's
905671 LCR - Transit	Ward		3,850
Billings Bridge Transitway	17	Replace Entrance Doors And Frames	74
Blair Transitway Station	11	Replace Complete Elevator System #21, 22, 23	471
Bus Storage - Pinecrest	07	Replace Roof Area 5,6	345
City Wide: Transit Facilities	CW	Contingency: Transit	167
City Wide: Transit Facilities	14	Replace Pole Lights/Fixtures, Transitway Stns	23
North Garage And Office - Oc Transpo	18	Replace Roof Area 7, 13	250
Office And Garage - Merivale	09	Replace Hvac System (Repair Bays)/Panels Transfers And Starters (Bus Storage)/Exterior Lighting (Bus Storage)/Design - Countdown Area	665
Place D'Orleans Transitway Station	01	Replace Shelter Lighting Fixtures	105
Queensway Transitway Station	08	Replace Complete Elevator System #01, 02	426
South Garage - St-Laurent	18	Replace Roof Area 12,15,16 And 17/Heat Recovery Units 9,10,11,12,15,16,17 And 18	815
St-Laurent Transitway Station	13	Rehabilitation Of West Ventilation Structure	417
Westboro Transitway Station	15	Replace Exterior Doors & Frames/Glazing Units	92

City of Ottawa

Service Area: Transit Services

2010 Draft Budget

In Thousands (\$000)

Program Information	Financial Details
---------------------	-------------------

Renewal O-Train Structures Program

Dept: Infrastructure Services	Category: Renewal of City Assets	Ward: CW	Year of Completion: Various
-------------------------------	----------------------------------	----------	-----------------------------

The O-Train Rehabilitation Program provides for condition assessments, preventative maintenance, rehabilitation and reconstruction works undertaken on the O-Train structures (non rail / rail bed - infrastructure).

Program funding requirements to support renewal needs are defined in the Long Range Financial Plan. Actual budget allocations for these programs are adjusted to reflect change in need and affordability. Detailed information and costs associated with specific components and projects follow this program summary page.

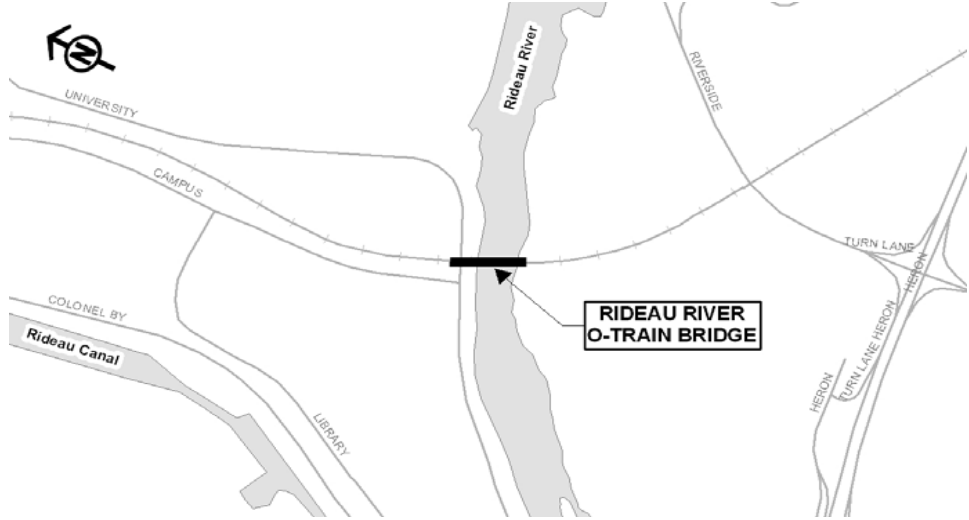
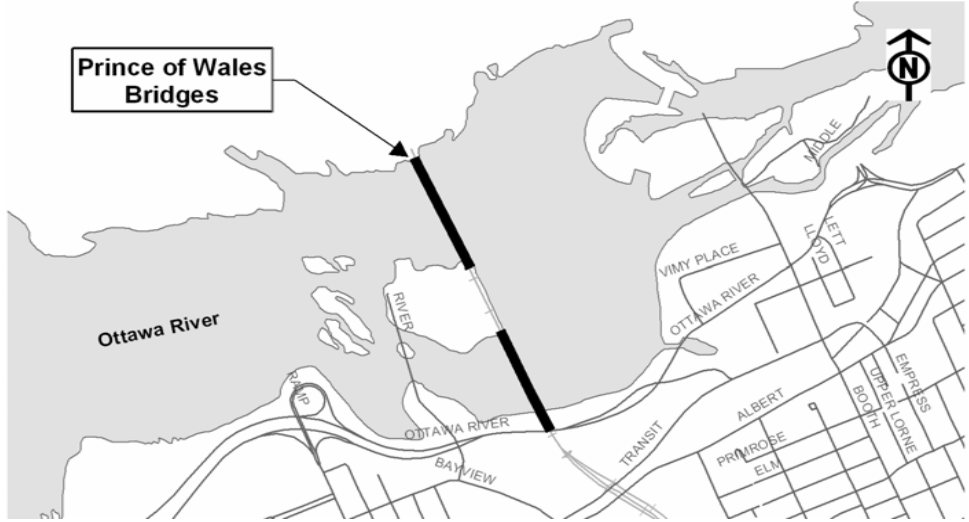
2010 Request	3,935	Previous Authority	
Revenues	-	Rate Supported	-
Tax Supported/ Dedicated	2,285	Development Charges	-
Gas Tax	550	Debt	1,100
Forecast	2009	2010	2011
Authority	3,935	3,250	400
Spending Plan	3,935	3,250	400
FTE's			
Operating Impact			

City of Ottawa

Service Area: Transit Services

2010 Draft Budget

In Thousands (\$000)

Project	Ward	Location/Description	\$000's
<p>904730 Rideau River O-Train Bridge (SN015290)</p> <p>Structural and seismic evaluations as well as renewal option analysis were completed for the O-Train Rideau River Bridge (SN 015290) in 2008. The structural evaluation report identified several items requiring repair to preserve the long-term load carrying capacity of the bridge and the seismic evaluation identified several bridge components which are seismically deficient.</p> <p>Implementation of the bridge upgrades, including structural repairs and improvements, recoating of the existing steel structure and seismic upgrades will be phased over 3 years, starting in 2010.</p> <p>Future budget requests will provide the authority necessary to implement the subsequent phases of this project.</p>	16	<p>Rideau River at Carleton U (SN015290)</p> 	1,500
<p>905652 Prince of Wales Bridge Condition Assessment</p> <p>The project involves the Condition Assessment and Renewal Options for the rehabilitation of these structures. The scope of work include Detailed Condition Assessment and Inspection of superstructure above and below deck, of substructure -below water as well as Seismic Evaluation of Superstructure and Substructure and the preparation of renewal options.</p> <p>These assessments are necessary to adequately define conditions, coordination requirements, and explore renewal options prior to initiating design stages.</p>	14, 15	<p>O-Train Track Extension over Ottawa River (SN011970-1/2)</p> 	1,500

City of Ottawa

Service Area: Transit Services

2010 Draft Budget

In Thousands (\$000)

Project	Ward	Location/Description	\$000's
905569 Scoping Pre/Post O-Train Structures	CW	Renewal	135
Scoping and design briefs are necessary to adequately define O-Train structure conditions, coordination requirements and project limits prior to initiating design stages. Post construction funding is required to address assessments and unplanned/unexpected.			
O-Train Sawmill Creek Culvert	16	0.73 km S of Walkley Rd (SN055470)	50
O-Train O/P at Hunt Club Rd	10, 16	0.65 km W of Bank St (SN055350)	40
O-Train O/P Ped Path @ South Keys	10, 16	0.39 km N of Hunt Club Rd (SN058950)	45
905570 O-Train Structures - 2010	CW	Renewal	400
This component of the program provides for the engineering and construction activities relating to repair and rehabilitation of various O-Train structures to address deficiencies. The size and complexity of the projects vary considerably.			
O-Train Dow's Lake Tunnel Cut Off	16, 17	O-Train at Dow's Lake/Rideau Canal/Colonel By Dr. (SN019020)	400
East Retaining Wall at O-Train under Hwy 417	14, 15	0.19 km S of Gladstone Ave (SN019160)	50
West Retaining Wall at O-Train under Hwy 417	14, 15	0.19 km S of Gladstone Ave (SN019161)	50
O-Train Culvert Brookfield	16	0.84 km N of Walkley Rd (SNT055300)	20
O-Train Culvert Brookfield	16	0.77 km N of Walkley Rd (SNT058900)	20
905700 Regulatory Structural Inspections	CW	Regulatory	400
Periodic, detailed and special inspections of the condition of the O-Train Structures are necessary to meet statutory requirements to identify their condition, performance, maintenance and renewal needs in order to provide continued safe and reliable use of the structures. Outcomes provide for programmed maintenance and renewal needs that are required to reduce loss of remaining service life or to extend it, and thereby minimizing total cost of ownership.			

City of Ottawa

Service Area: Transit Services

2010 Draft Budget

In Thousands (\$000)

Program Information	Financial Details
---------------------	-------------------

Transit Renewal Program (non Rail)

Dept: Infrastructure Services	Category: Renewal of City Assets	Ward: CW	Year of Completion: Various
-------------------------------	----------------------------------	----------	-----------------------------

The Transitway Rehabilitation Program provides for condition assessments, preventative maintenance, rehabilitation and reconstruction works undertaken on the City's existing roadways and structures dedicated to transit. The program is focused on:

- Roads and Park & Ride Areas (renewal of roadways and parking dedicated to transit);
- Transitway Structures (renewal of bridges, culverts, retaining walls serving the dedicated transit network);
- Project Scoping and Engineering.

Program funding requirements to support renewal needs are defined in the Long Range Financial Plan. Actual budget allocations for these programs are adjusted to reflect change in need and affordability. Detailed information and costs associated with specific components and projects follow this program summary page.

2010 Request	2,385	Previous Authority	
Revenues	-	Rate Supported	-
Tax Supported/ Dedicated	1,585	Development Charges	-
Gas Tax	300	Debt	500
Forecast	2009	2010	2011
Authority	2,385	4,210	4,275
Spending Plan	2,385	4,210	4,275
FTE's			
Operating Impact			

City of Ottawa

Service Area: Transit Services

2010 Draft Budget

In Thousands (\$000)

Project	Ward	Location/Description	\$000's
905562 Scoping Pre/Post for Transitway Roads	CW	Renewal	55
Scoping and design briefs are necessary to adequately define transit road conditions, coordination requirements and project limits prior to initiating design stages. Post construction funding is required to address assessments and unplanned/unexpected adjustments outside the original implementation funding envelopes.			
905563 Renewal Transitway Roads - 2010		Renewal	900
This program provides for engineering and construction activities to maintain and rehabilitate the existing transit roadway infrastructure. The activities include asphalt overlays, rehabilitation of concrete pavements and other surface repairs/rehabilitation works on roadways dedicated to transit and at transit stations.			
Southeast Transitway - Walkley Station Exit Ramp	16	Southeast Transitway to Walkley Rd (OR 74)	
Southeast Transitway - Walkley Station On-Ramp	16	Walkley Rd (OR 74) to Southeast Transitway	
Lincoln Heights Station East Loop And Carling Av Entrance (Asphalt Surfaces Only)	7	Carling Av (OR 38) to West Transitway	
Riverside Dr Transit Entrance	17, 18	Industrial Av (Rr 30) to East Transitway	
West Transitway	7	Southbound Ramp To Highway 417 Westbound to	
West Transitway	7	Woodroffe Av (OR 15) to Queensway Station - Westbound	
OR 174 Eastbound Bus Lane	1, 2, 11	Montreal Rd (Or34) to Oreleans Blvd Underpass (OR 56)	
OR 174 Westbound Bus Lane	1, 2, 11	Montreal Rd (Or34) to Oreleans Blvd Underpass (OR 56)	
905565 Scoping Pre/Post for Transitway Structures	CW	Renewal	50
Scoping and design briefs are necessary to adequately define transit structure conditions, coordination requirements and project limits prior to initiating design stages. Post construction funding is required to address assessments and unplanned/unexpected adjustments outside the original implementation funding envelopes.			
W Transitway O/P Single Cell Box Culvert	15	W Transitway north of Scott Street (SN018230-1)	50
Cut Off			
MacKenzie King Bridge Repairs to Transit Lanes	12	Albert St/Slater St.Between Elgin and Nicholas (SN012200)	250
W Transitway O/P Twin Cell Box Culvert	15	W Transitway north of Scott Street (SN018230-2)	150

City of Ottawa

Service Area: Transit Services

2010 Draft Budget

In Thousands (\$000)

Project	Ward	Location/Description	\$000's
905566 Renewal Transitway Structures	CW	Renewal	280
<p>This component of the program provides for the engineering and construction activities relating to repair and rehabilitation of various transitway structures to address deficiencies and to extend their service life. The size and complexity of the projects vary considerably. The activities are scheduled based on needs identified through the Structures Asset Management programs.</p>			
SE -Transitway Riverside Dr Overpass	17	SE Twy over Riverside Dr. near Hinck's Lane (SN056060)	150
E Twy Riverside Dr Overpass	18	SE Twy at Riverside Dr. near Trembley Rd. (SN056650)	130
<p>Cut Off</p>			
MacKenzie King Bridge Repairs to Transit Lanes	12	Albert St/Slater St.Between Elgin and Nicholas (SN012200)	700
E Twy Blair Station Ped Bridge Over Hwy 174	11	E Twy Blair Station (SN229040-4)	500
905567 Bridge Salt Protection/Concrete Patching	CW	Renewal	1,000
<p>This project provides funding for salt protection on bridge concrete elements, for small-scale concrete patch repairs and for joint seal replacements at identified transitway structures across the City. This preventative maintenance and renewal needs project is designed to extend existing service life or defer more expensive major renewals, thus minimizing total cost of ownership.</p>			
905568 Crack Sealing - Transit	CW	Renewal	100
<p>Sealing of cracks in asphalt concrete pavements is a necessary and important treatment to mitigate the infiltration of water into the pavement structure, and prevent spalling and ravelling of unsealed cracked edges. Crack sealing is typically applied to pavements that are 3 to 5 years old. Routing and sealing can extend pavement service life by 3 - 5 years. Current funding will allow city wide implementation of this treatment along the transitway.</p>			

City of Ottawa

Service Area: Transit Services

2010 Draft Budget

In Thousands (\$000)

Project Information			Financial Details			
905171 IT OPS Cad RMS Integration						
Dept: Transit	Category: Strategic Initiative	Ward: CW	Year of Completion:		2011	
<p>Computer Aided Dispatch (CAD) and Records Management and Reporting system with mobile application for Transit Law Enforcement for effective and efficient response, coordination, management and reporting of incidents and intelligence. Required for compliance of Special Constable Program Memorandum of Understanding with Ottawa Police Service and the Ministry of Community Safety and Correctional Services regulations. One FTE will be required in 2011 to manage the IT component of the project.</p>			2010 Request	2,000	Previous Authority	800
			Revenues	-	Rate Supported	-
			Tax Supported/ Dedicated	2,000	Development Charges	-
			Gas Tax	-	Debt	-
			Forecast	2010	2011	2012
			Authority	2,000	-	-
			Spending Plan	2,000		
			FTE's			
			Operating Impact			
905204 IT 2009 Transit Computer System						
Dept: Transit	Category: Strategic Initiative	Ward: CW	Year of Completion:		2010	
<p>In support of the HASTAS upgrade project. There is a requirement to upgrade the scheduling system.</p>			2010 Request	845	Previous Authority	1,260
			Revenues	-	Rate Supported	-
			Tax Supported/ Dedicated	-	Development Charges	-
			Gas Tax	845	Debt	-
			Forecast	2010	2011	2012
			Authority	845	-	-
			Spending Plan	845		
			FTE's			
			Operating Impact			

City of Ottawa

Service Area: Transit Services

2010 Draft Budget

In Thousands (\$000)

Project Information		Financial Details			
905496 2010 Smart Driver					
Dept: Transit	Category: Strategic Initiative	Ward: CW	Year of Completion: 2010		
<p>Though SmartDriver (a CUTA program), all bus operators will be trained in driving techniques which will promote fuel savings. This will also impact wear and tear on vehicles, resulting in significant savings on vehicle maintenance. SmartDriver also addresses operator performance issues, and reinforces defensive driving techniques.</p> <p>The funding is needed to purchase equipment and train all instructors in Transit Training. The training will then be extended by incorporating a full day of SmartDriver into Pro in Motion, and all New Bus Operator training. There will be an ongoing campaign to instruct staff in SmartDriver techniques.</p>		2010 Request	175	Previous Authority	
		Revenues	-	Rate Supported	-
		Tax Supported/ Dedicated	75	Development Charges	-
		Gas Tax	100	Debt	-
		Forecast	2010	2011	2012
		Authority	175	-	-
		Spending Plan	175		
		FTE's			
		Operating Impact			
905497 2010 IT E-Learning & Video Enhancement					
Dept: Transit	Category: Strategic Initiative	Ward: CW	Year of Completion: 2010		
<p>As part of the 2008 review by transit professionals from major properties in North America of Transit Training, we have identified the need to produce new training videos. Our present videos are out-dated, and do not line up with corporate strategic messaging and our commitment to service excellence. Creating new videos is essential to assist us in the delivery of training professional operators. This is an opportunity for 'branding', and for creating a consistent 'message and look' to all our productions.</p>		2010 Request	250	Previous Authority	
		Revenues	-	Rate Supported	-
		Tax Supported/ Dedicated	125	Development Charges	-
		Gas Tax	125	Debt	-
		Forecast	2010	2011	2012
		Authority	250	-	-
		Spending Plan	250		
		FTE's			
		Operating Impact			

City of Ottawa

Service Area: Transit Services

2010 Draft Budget

In Thousands (\$000)

Project Information		Financial Details			
905504 IT 2010 Wireless Network Infrastructure					
Dept: Transit	Category: Strategic Initiative	Ward: CW	Year of Completion:		2012
Implement WLAN Network Infrastructure within transit facilities to support the deployment and effective operation of the following SmartBus features: SmartCARD, NSAS, APC and Vehicle Diagnostics information management.		2010 Request	3,000	Previous Authority	
		Revenues	-	Rate Supported	-
		Tax Supported/ Dedicated	1,500	Development Charges	-
		Gas Tax	1,500	Debt	-
		Forecast	2010	2011	2012
		Authority	3,000	-	-
		Spending Plan	1,000	1,500	500
		FTE's			
		Operating Impact			

City of Ottawa

Transit Capital Works-in-Progress (at September 30, 2009)
In Thousands (\$000)

2010 Draft Budget

Project Number & Description	Authority	Expenditures & Commitments	Unspent
Bus Rapid Transit Total	25,850	11,076	14,774
904683 SW Transitway (Baseline to Norice)	25,350	10,989	14,361
905183 TMP Supplementary Transit Network	500	87	413
Buses-Growth, Replacement & Refurbishing	445,500	398,227	47,273
900292 Bus Equipment Replacement Program	18,068	17,521	547
900297 Bus Refurbishment Program	48,525	46,995	1,530
900525 Revenue Bus Replacement Program	89,015	89,014	1
900862 New Buses	23,282	23,260	22
900874 Bus Additions	97,574	92,937	4,637
903960 Revenue Bus Replacement Program	90,356	76,804	13,552
905146 Bus Additions	13,256	8,224	5,032
905200 2009 Bus Refurbishing Program	13,800	878	12,922
905205 2009 Revenue Bus Replacement Program	51,624	42,594	9,030
Light Rail Transit	1,000	214	786
905245 Light Rail Transit Office	1,000	214	786
Normal Transit System Growth	147,228	120,991	26,237
900273 Transitway System Improvements	20,809	20,660	149
900278 Rideau Canal Pedestrian Crossing	5,200	5,183	17
900517 New Garage/Fleet Capacity Optimize	11,950	11,525	425
901223 Smart Growth Transit-Transit Control Ctr	4,050	4,569	(519)
903401 Transitway System Improvements	2,660	1,391	1,269
903402 Transitway Capital Works	3,646	3,549	97
903512 Arterial Transit Priority Measures	830	830	-
903740 TWY Priority Measures Parallel Corridors	200	200	-
903751 Transitway Improvements/LRT	4,030	4,051	(21)
903780 Transit Garage	80,363	64,760	15,603
903787 2006 Transit Priority Measures	263	264	(1)
904246 2007 Transit Priority Measures	700	654	46
904247 2007 Transit Priority Corridor Implement	1,000	516	484
904295 Miscellaneous Vehicle Additions	247	172	75
904483 Transitway Stations	4,000	1,138	2,862
904541 2008 Transit Priority Measures	1,330	634	696
904602 Transitway System Improvements	500	500	-
904868 Transitway System Improvements	1,465	137	1,328
904907 2009 Transit Priority Corridors	1,000	-	1,000
904908 2009 Transit Priority Measures	1,580	124	1,456
905147 Transitway Capital Works-2009	1,000	-	1,000
905206 2009 Miscellaneous Vehicle Additions	405	134	271
Rapid Transit Network	311,290	212,508	98,782
900267 Rapid Transit Extensions -Studies & EA's	3,417	2,872	545
900270 Park & Ride Facilities	18,237	18,606	(369)
900280 Southwest Transitway Ext(Sportsplex-CNR)	11,000	9,520	1,480
900627 Terry Fox Transitway Station	11,607	11,157	450
902132 Park & Ride Facilities	8,892	7,791	1,101
902135 Rapid Transit EA Studies	10,639	9,925	714
902973 Smart Growth Transit-Env Assessments	9,000	7,941	1,059

City of Ottawa

Transit Capital Works-in-Progress (at September 30, 2009)
In Thousands (\$000)

2010 Draft Budget

Project Number & Description	Authority	Expenditures & Commitments	Unspent
903272 Park and Ride Expansion Prog - Studies	300	181	119
903273 Transitway Corridor Protection	6,000	1,644	4,356
903274 West Transitway (Pinecrest to Bayshore)	45,100	42,471	2,629
903275 ISF-SW Transit -Fallowfield-Barrhaven TC	52,600	17,673	34,927
903278 Park and Ride Facilities	24,034	6,412	17,622
903280 West Transitway (Terry Fox to Hazeldean)	1,000	-	1,000
903282 Future Trans Corridor-Prog Mgmt Office	12,929	13,032	(103)
903513 Transportation Master Plan	2,400	2,307	93
903715 N-S Light Rail - Phase 1	42,200	41,818	382
904075 LRT Project Management Office	5,307	5,307	-
904480 Cumberland Twy: Navan to Frank Kenney	10,000	6,720	3,280
904481 West Twy Corridor (Terry Fox - Eagleson)	2,000	1,930	70
904482 West Twy (Bayshore Stn to Moodie)	8,000	3,725	4,275
904684 Woodroffe Station at Strandherd	3,334	319	3,015
904688 West Transitway (SW Twy to Pinecrest)	4,000	3	3,997
905149 O Train Capital Works - 2009	7,394	768	6,626
905184 Rapid Transit EA Studies 2009	7,500	386	7,114
905190 Transit Corridor Protection 2009	4,000	-	4,000
905191 Transportation Master Plan 2009	400	-	400
Renewal of Facilities & Equipment	200,311	127,946	72,365
900287 Lebreton Transitway Relocation	3,513	3,103	410
900722 Heavy Vehicle & Equipment Repl. Program	52,775	52,338	437
900723 Light Vehicle & Equipment Repl. Program	16,395	16,146	249
901132 Transitway Rehabilitation	1,840	1,744	96
901230 O Train Capital Works	5,057	4,619	438
903400 Transitway Structures	1,205	1,153	52
903468 Transit Facility - Operational Response	1,642	1,645	(3)
903874 Life Cycle Renewal-Transit Facility 2006	2,095	2,068	27
903880 Transit Facility-Operational Response 06	2,068	2,042	26
903892 Transitway Rehabilitation 2006	900	620	280
904218 Roads and Park & Ride Areas	2,195	2,178	17
904219 Transitway Structures	1,340	1,199	141
904315 Life Cycle Renewal Transit Facility 2007	2,450	2,372	78
904322 Transit Facility Operational Response 07	2,441	2,438	3
904369 Scoping Pre /Post Engineering	160	163	(3)
904410 IT Transit Secure Program	2,312	1,995	317
904415 Transit Stores Vehicles & Equip Replace	690	530	160
904598 Roads Park & Ride Areas	875	858	17
904599 Scoping Pre/Post Eng for 2009	165	170	(5)
904601 St Laurent Station	4,240	2,629	1,611
904610 IT Bus Radio System	12,875	10,304	2,571
904654 Lifecycle Renewal Transit	1,402	1,353	49
904655 Transit Facility Ops Response 2008	650	706	(56)
904689 Double Decker Roadway Modifications	1,000	367	633
904769 Central Area Station Improvements	5,000	45	4,955
904866 Roads & Park and Ride Areas	750	752	(2)
904867 Scoping Pre/Post Eng for 2010 (Roads)	55	3	52

City of Ottawa

Transit Capital Works-in-Progress (at September 30, 2009)
In Thousands (\$000)

2010 Draft Budget

Project Number & Description	Authority	Expenditures & Commitments	Unspent
904869 Transitway Structures	350	-	350
904937 Scoping Pre/Post Eng - 2010 (Structures)	150	150	-
904938 Bridge/Retaining Wall Salt Protection	700	564	136
904959 Lifecycle Renewal Transit 2009	3,850	2,759	1,091
904964 Transit Facility Ops Response 2009	2,718	1,170	1,548
905152 Building Capacity Improvement	3,644	149	3,495
905155 Transit Vehicle Emission Reduction	200	-	200
905156 Non-Revenue Vehicles Replacement	1,300	1,125	175
905159 IT Transit GIRO System	470	278	192
905160 Transit Communications	800	-	800
905163 Transit Infrastructure Security Mgmt	160	-	160
905170 Maintenance Equipment Replacement-2009	1,536	53	1,483
905174 IT CCTV Cameras	984	-	984
905175 IT Automated Passenger Count	300	-	300
905202 IT 2009 IT Infrastructure - Para Transpo	550	-	550
905203 IT 2009 Transit Vehicle Info Sys	5,650	-	5,650
905293 ISF-Resurfacing-Eagleson Park & RideLots	720	327	393
905295 ISF-PedestrianOvrpass-Woodroffe-Baseline	5,000	207	4,793
905296 ISF-Resurfacing-Transitway Blair Station	570	570	-
905297 ISF-Resurfacing - Twy St. Joseph On-Ramp	55	39	16
905298 ISF-Structures - Transitway Blair Ramp	1,000	-	1,000
905299 ISF-Structures -Transitway-Nicholas Ramp	1,300	-	1,300
905300 ISF-Structures - Twy - Sackville Bridge	200	-	200
905306 ISF-Baseline Stn Tunnel-College Overpass	38,000	7,015	30,985
905330 ISF-Safety Impv - Albert and Slater	1,666	-	1,666
905331 ISF-Transitway Impv Prg - Blair Station	100	-	100
905332 ISF-Structures -Transit WallPreservation	1,000	-	1,000
905333 ISF-Refurbish Spv Facility-StLaurent Stn	23	-	23
905334 ISF-Transit Impv Program -St Laurent Stn	175	-	175
905335 ISF-Transit Impv Program - Hurdman Stn	75	-	75
905336 ISF-Transitway Impv Program - Lighting	75	-	75
905337 ISF-O-Train Corridor Upgrades	900	-	900
Renewal of Facilities & Equipment Progs	1,300	314	986
904730 Rideau River O-Train Bridge	1,300	314	986
Transit Strategic Initiatives/Regulatory	69,524	28,151	41,373
900300 IT Smartcard	23,750	1,216	22,534
900362 IT Infrastructure - Para Transpo	2,152	1,562	590
900516 IT Transit Vehicle InfoSystem(Smart Bus)	8,095	7,636	459
900518 Plant/Threat/Risk Analysis	7,216	7,151	65
901165 Rural Service Expansion	4,820	4,818	2
902952 IT Transit Computer Sys New Initiatives	6,248	4,362	1,886
903565 IT Inventory Bar Code Implementation	600	474	126
904546 IT Next Stop Announcements	6,720	1	6,719
904547 Safety Operation Management System	1,050	218	832
904606 Security & Incident Management System	400	-	400
904607 IT Transit Management ReportingTool(GPS)	300	-	300
904608 IT Double Decker Location Avoidance Sys	50	54	(4)

City of Ottawa

Transit Capital Works-in-Progress (at September 30, 2009)
In Thousands (\$000)

2010 Draft Budget

Project Number & Description	Authority	Expenditures & Commitments	Unspent
904640 Storage & Control of Cores-Material Mgmt	250	-	250
904822 Ped Crossing (Baseline Stn to Algonquin)	4,400	652	3,748
905148 IT E-Learning	300	-	300
905150 Station Safety-Emergency Plan/Response	100	-	100
905151 Business Continuity-Emerg Plan/Response	25	7	18
905158 IT Transit Performance Mgmt Software	300	-	300
905171 IT OPS Cad RMS Integration	800	-	800
905173 Double Decker Infrastructure Study	300	-	300
905201 IT 2009 Smartcard	388	-	388
905204 IT 2009 Transit computer Systems	1,260	-	1,260
Grand Total	1,202,003	899,427	302,576

City of Ottawa
Forecast 2011-2019
In Thousands (\$000)

2010 Draft Budget

Projects	Draft Budget	Forecast			Total
	2010	2011	2012	2013 - 2019	
Renewal of City Assets	70,701	-	-	-	70,701
904730 Rideau River O-Train Bridge	1,500	-	-	-	1,500
905152 Building Capacity Improvement	6,000	-	-	-	6,000
905159 IT Transit GIRO System	550	-	-	-	550
905160 Transit Communications	275	-	-	-	275
905183 TMP Supplementary Transit Network	1,000	-	-	-	1,000
905500 2010 Bus Replacement	29,600	-	-	-	29,600
905502 2010 Bus Refurbishment	2,000	-	-	-	2,000
905492 2010 Transitway Stations	4,100	-	-	-	4,100
905245 Light Rail Transit Office	6,000	-	-	-	6,000
905569 Scoping Pre/Post O-Train Struc. - 2010	135	-	-	-	135
905562 Scoping Pre/Post Tway Roads - 2010	55	-	-	-	55
905563 Renewal Transitway Roads - 2010	900	-	-	-	900
905565 Scoping Pre/Post Tway Struc. - 2010	50	-	-	-	50
905567 Bridge Salt Prot./Conc Patching - Twy	1,000	-	-	-	1,000
904769 Central Area Station Improvements	1,600	-	-	-	1,600
905490 2010 Transitway System Improvements	750	-	-	-	750
905491 2010 Transitway Capital Projects	1,000	-	-	-	1,000
905494 2010 Transit Facilities Lifecycle	2,000	-	-	-	2,000
905501 IT 2010 Computer H&S	250	-	-	-	250
905503 2010 Train & Rail Lifecycle - O Train	3,029	-	-	-	3,029
905493 2010 Transit Network Capital Projects	800	-	-	-	800
905652 PofW Bridge Condition Assessment	1,500	-	-	-	1,500
905570 O-Train Structures - 2010	400	-	-	-	400
905700 Regulatory Structural Inspections - 2010	400	-	-	-	400
905566 Renewal Transitway Structures	280	-	-	-	280
905568 Crack Sealing - Transit	100	-	-	-	100
905498 2010 Miscellaneous Vehicle Replacement	1,577	-	-	-	1,577
905671 LCR - Transit	3,850	-	-	-	3,850
Growth	179,621	333,258	220,835	2,655,833	3,389,547
903271 Coventry Overpass to Train Station	-	2,240	13,440	-	15,680
903279 Cumberland Transitway (Navan -Blair Stn)	2,464	-	45,830	-	48,294
903284 LRT (Bayview to South Keys)	-	-	-	8,176	8,176
904393 Light Rail Vehicles	-	-	-	357,500	357,500
904482 West Twy (Bayshore Stn to Moodie)	-	34,560	-	-	34,560
904610 IT Bus Radio System	-	270	300	2,505	3,075
904683 SW Transitway (Baseline to Norice)	35,000	55,000	15,000	40,000	145,000
904730 Rideau River O-Train Bridge	-	2,000	-	-	2,000
905150 Station Safety-Emergency Plan/Response	-	100	-	-	100
905151 Business Continuity-Emerg Plan/Response	-	50	-	-	50
905155 Transit Vehicle Emission Reduction	-	-	-	400	400
905159 IT Transit GIRO System	-	-	300	1,350	1,650
905160 Transit Communications	-	200	50	1,550	1,800
905163 Transit Infrastructure Security Mgmt	-	160	160	1,120	1,440
905170 Maintenance Equipment Replacement-2009	-	686	695	4,419	5,800
905174 IT CCTV Cameras	-	350	300	4,400	5,050
905176 LRT (Tunney's to Blair, rail yds & Nich)	74,267	127,434	40,974	1,499,861	1,742,536
905178 LRT (Tunney's Pasture to Baseline)	-	-	-	12,969	12,969
905183 TMP Supplementary Transit Network	-	12,000	13,000	105,000	130,000
905202 IT 2009 IT Infrastructure - Para Transpo	-	175	1,210	3,213	4,598
905380 West Transitway - Terry Fox Underpass	-	-	3,000	12,000	15,000
905500 2010 Bus Replacement	-	28,000	8,000	136,000	172,000
905502 2010 Bus Refurbishment	-	7,250	18,175	130,465	155,890

City of Ottawa
Forecast 2011-2019
In Thousands (\$000)

2010 Draft Budget

Projects	Draft Budget	Forecast			Total
	2010	2011	2012	2013 - 2019	
905507 2010 Bus Growth	34,400	35,200	32,000	169,600	271,200
903780 Transit Garage	17,000	-	-	-	17,000
905439 2010 Transit Priority Corridors	1,000	2,000	2,000	14,000	19,000
905440 2010 Transit Priority Measures	1,600	1,600	1,600	11,200	16,000
905499 2010 Miscellaneous Vehicle Growth	200	80	120	725	1,125
905177 Transit Priority (Woodroffe/Baseline)	2,240	-	-	-	2,240
905245 Light Rail Transit Office	-	6,000	6,000	35,000	47,000
905435 Rapid Transit EA Studies 2010	2,000	2,000	1,000	8,500	13,500
905436 Transit Corridor Protection 2010	2,000	2,000	2,000	14,000	20,000
905569 Scoping Pre/Post O-Train Struc. - 2010	-	100	-	-	100
905562 Scoping Pre/Post Tway Roads - 2010	-	30	30	410	470
905563 Renewal Transitway Roads - 2010	-	930	930	7,500	9,360
905565 Scoping Pre/Post Tway Struc. - 2010	-	250	165	1,050	1,465
905567 Bridge Salt Prot./Conc Patching - Twy	-	1,000	1,000	4,200	6,200
905490 2010 Transitway System Improvements	-	640	660	4,100	5,400
905491 2010 Transitway Capital Projects	-	1,000	1,000	7,000	9,000
905501 IT 2010 Computer H&S	-	400	820	4,425	5,645
905503 2010 Train & Rail Lifecycle - O Train	-	67	986	4,942	5,995
905604 Hunt Club Pedestrian Overpass South Keys	5,000	-	-	-	5,000
905433 Park and Ride Exp Prog - Studies 2010	50	100	50	550	750
905434 Park and Ride Facilities 2010	2,000	2,000	2,000	14,000	20,000
905437 Transportation Master Plan 2010	400	400	500	3,600	4,900
905570 O-Train Structures - 2010	-	750	-	-	750
905700 Regulatory Structural Inspections - 2010	-	400	400	2,800	3,600
905566 Renewal Transitway Structures	-	1,900	2,050	5,250	9,200
905568 Crack Sealing - Transit	-	100	100	700	900
905498 2010 Miscellaneous Vehicle Replacement	-	1,300	1,300	9,100	11,700
905505 2011 Transit facilities Operations	-	1,000	1,000	7,000	9,000
905506 2012 Simulator (training)	-	-	1,000	-	1,000
905508 2010 Equipment Replace/Upgrade	-	1,536	1,690	4,653	7,879
905564 Renewal Transit Park & Ride Areas	-	-	-	600	600
Strategic Initiatives	6,270	-	-	-	6,270
905171 IT OPS Cad RMS Integration	2,000	-	-	-	2,000
905204 IT 2009 Transit computer Systems	845	-	-	-	845
905496 2010 Smart Driver	175	-	-	-	175
905497 2010 IT E-Learning & Video Enhancement	250	-	-	-	250
905504 IT 2010 Wireless Network Infrastructure	3,000	-	-	-	3,000
Grand Total	256,592	333,258	220,835	2,655,833	3,466,518